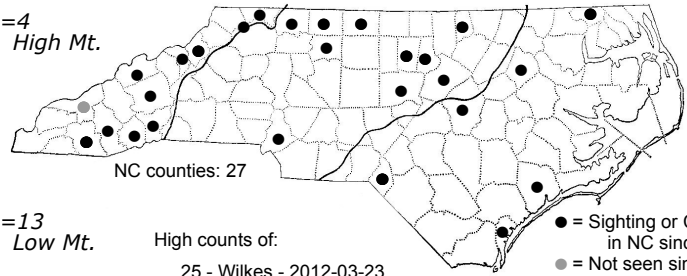
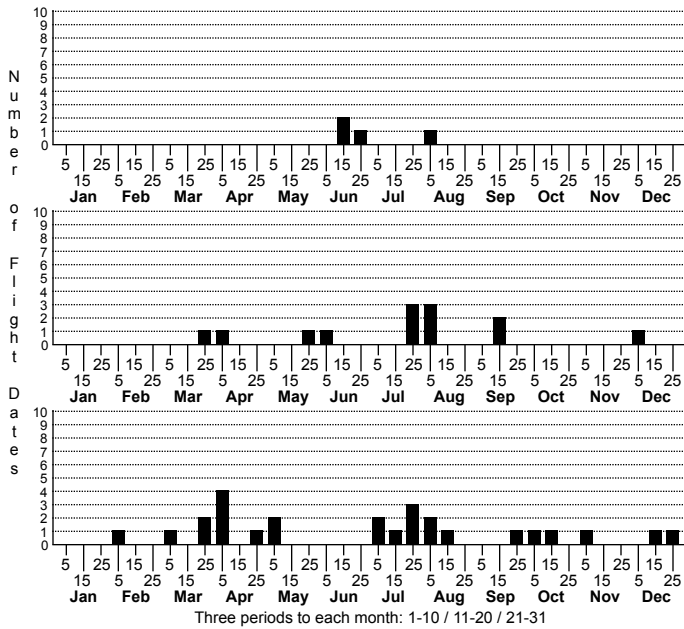


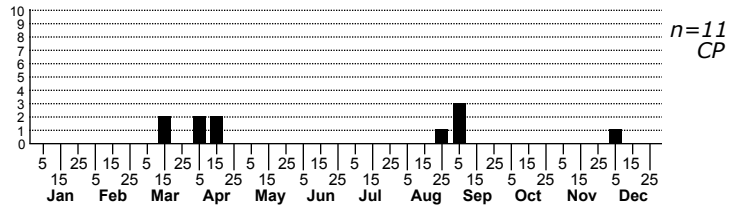
Frontinella pyramitela bowl and doily weaver



High counts of:

- 25 - Wilkes - 2012-03-23
- 23 - Swain - 2001-05-12
- 23 - Swain - 2001-05-12

| Status | Rank |
|--------|--------|
| NC | US |
| NC | Global |



ORDER:ARANEAE INFRAORDER:Araneomorphae
FAMILY:Linyphiidae SUBFAMILY:Linyphiinae

TAXONOMIC COMMENTS: *Frontinella pyramitela* was transferred from the genus *Linyphia* and synonymized with *F. communis* by Chamberlin and Ivie, 1944.

DISTRIBUTION_COMMENTS: Widespread throughout the US, but especially so in the southeast.

HABITAT: old field, bog, forest edge, low branches of trees, bushes, and tall grass

OBSERVATION_METHODS: Visual