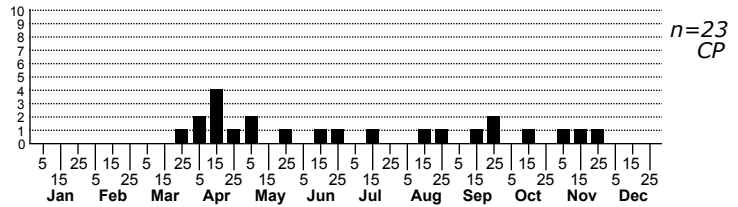
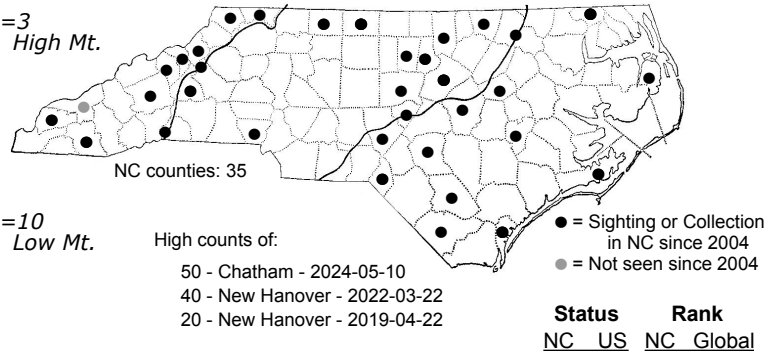
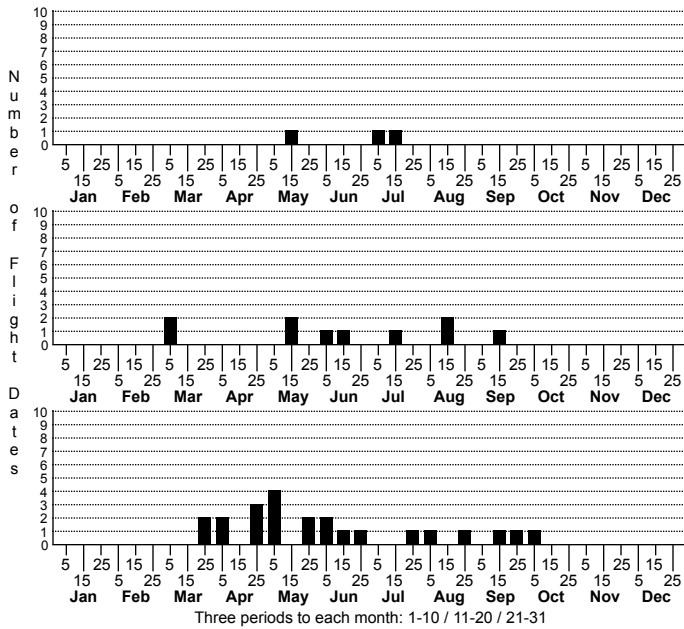


Eustala anastera Humpbacked orbweaver



ORDER:ARANEAE INFRAORDER:Araneomorphae
 FAMILY:Araneidae

FLD_GUIDE_DESCRIPTIONS: The prosoma is variable in color, usually matching the opisthosoma. The opisthosoma is triangular and tallest at the posterior end; this humped appearance leads to the common name. The coloration and pattern can vary from shades of tan and brown to vivid greens. Some have a pair of spots on the lateral sides of the humped area of the opisthosoma; some have a dark line down the median. Many have a foliate pattern. The ventral opisthosoma has a light central mark that runs from the epigastric furrow to the spinnerets; the mark is bordered in black. The scape of the female epigynum is directed anteriorly. The legs also vary in color and are covered with short spines in the female; the spines are more pronounced in the mature males. More than a dozen species of *Eustala* are in North America, and identification to species level is difficult without a specimen. (Rose, 2022)

DISTRIBUTION_COMMENTS: Common throughout North Carolina and the eastern United States. Adults spring through fall.

HABITAT: forest edge, understory of pine and hardwood forests, goldenrod fields and marshes.

OBSERVATION_METHODS: Sweep netting.