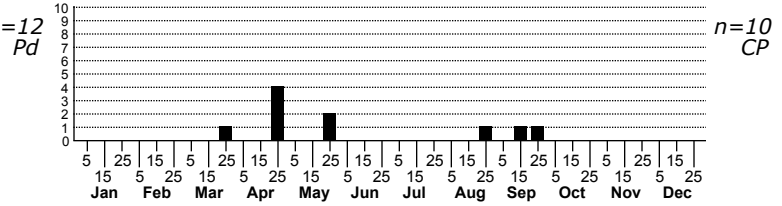
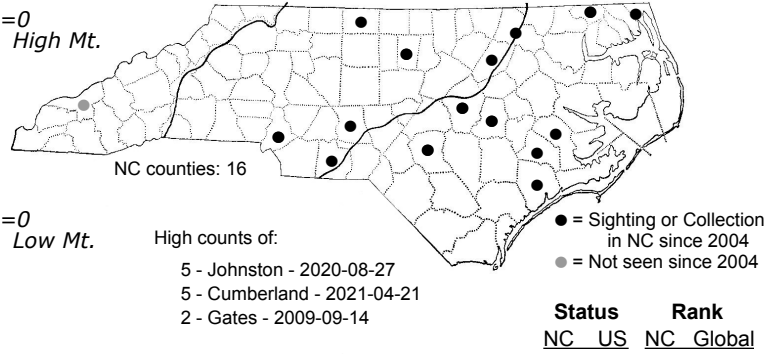
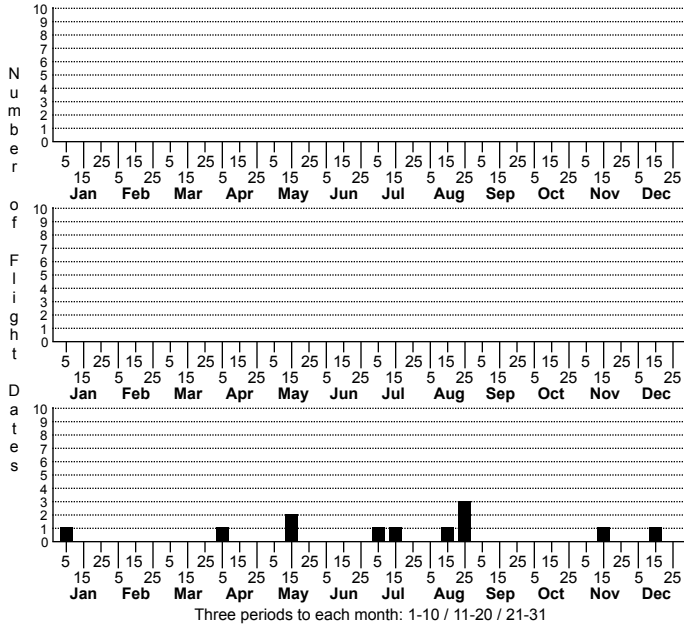


Gea heptagon an orbweaver



ORDER:ARANEAE INFRAORDER:Araneomorphae
 FAMILY:Araneidae

TAXONOMIC_COMMENTS: Apparently English heptagon- "seven-sided shape", from Greek heptagonos. This is probably a noun in apposition, which would mean it doesn't have to agree with the genus name in gender.

DISTRIBUTION_COMMENTS: Occasional throughout North Carolina and the eastern United States from March to November. This species may have been introduced to the Americas from the South Pacific. Eggs hatch in spring and the young spiderlings disperse and begin building webs, hunting, and growing. Males do not spin webs. Once mature, the males wander in search of a mate, and the females hang in webs eating and awaiting a mate. Once mated, the female focuses on eating and creating egg cases, which are flattened, about 1/2 inch long, and resemble bits of dry leaves. The first freezes usually kill all the adult spiders, with only the eggs overwintering.

HABITAT: old field, marshes, roadside ditch and agricultural fields.

OBSERVATION_METHODS: Visual observation, sweep netting.