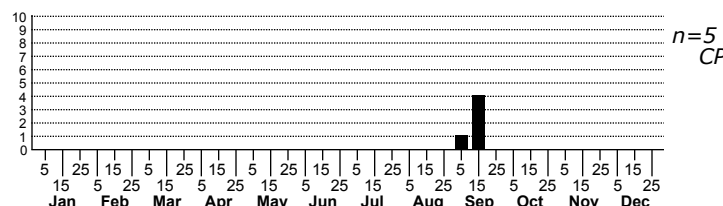
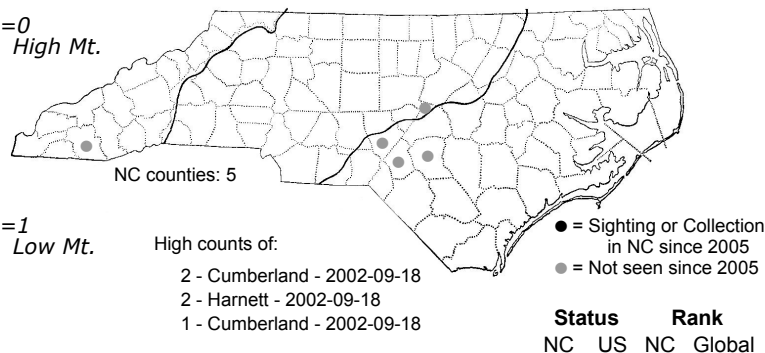
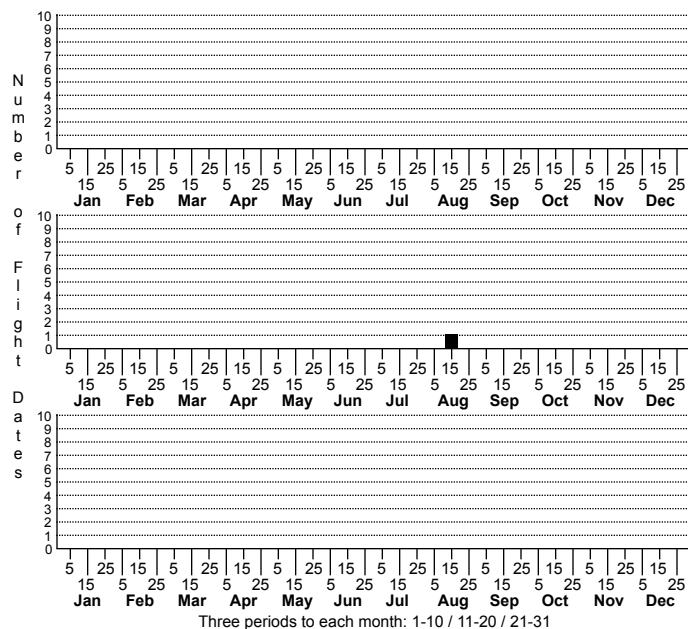


Trichordestra beanii None



FAMILY: Noctuidae SUBFAMILY: Noctuinae TRIBE: Hadenini
TAXONOMIC_COMMENTS:

FIELD GUIDE DESCRIPTIONS:

ONLINE PHOTOS:

TECHNICAL DESCRIPTION, ADULTS: McCabe (1980)

TECHNICAL DESCRIPTION, IMMATURE STAGES:

ID COMMENTS: The ground color is dull gray, shaded with fuscous (Forbes, 1954). The area around the reniform is brownish. The lines are filled with gray. The subterminal is offset at the costa, leaving a clear gray apical spot. The orbicular is large, oblique, and pale. A very small, dark claviform mark is present, filled with the ground color. The reniform is large; the upper part is pale and the lower dark brown. The hindwings are fuscous brown.

DISTRIBUTION: Southeastern, ranging west to Texas.

FLIGHT COMMENT: Single brooded, with most records from September.

HABITAT: Four of our records come from the Fall-line Sandhills and an historic record from A.H. Manee also comes from Southern Pines, presumably in the same habitat. One other historic record, however, comes from Highlands.

FOOD: Host plants are apparently unknown.

OBSERVATION_METHODS:

NATURAL HERITAGE PROGRAM RANKS: GNR SNR [SH]

STATE PROTECTION: Has no legal protection, although permits are required to collect it on state parks and other public lands.

COMMENTS: This species appears to be very rare throughout its range