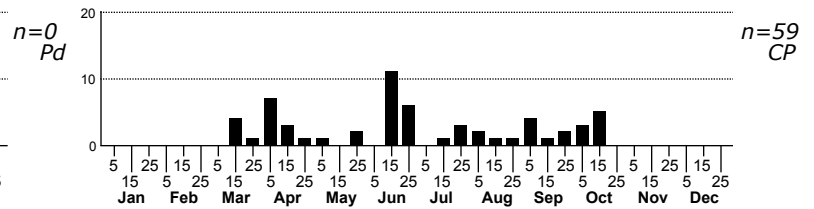
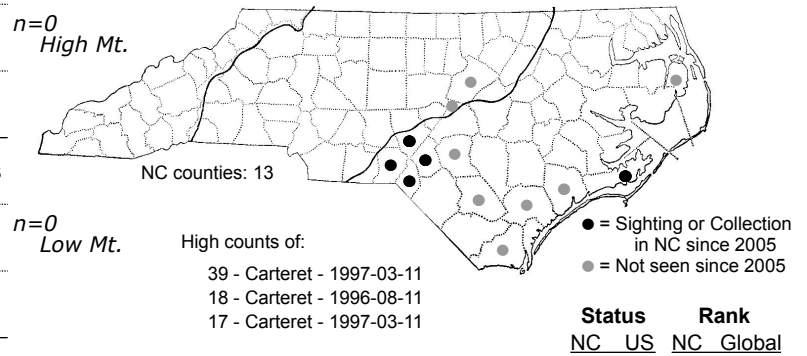
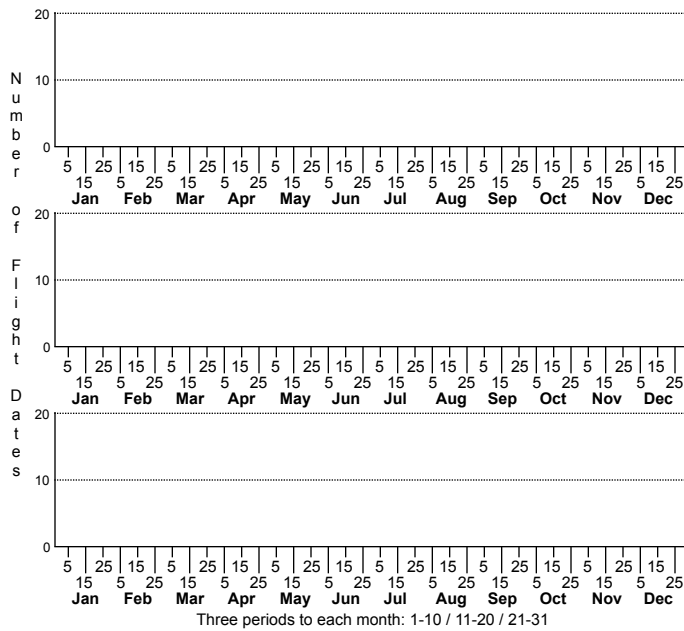


Leucania extincta None



FAMILY: Noctuidae SUBFAMILY: Noctuinae TRIBE: Leucaniini

TAXONOMIC_COMMENTS: One of 30 species in this genus that occur in North America north of Mexico (Lafontaine and Schmidt, 2010; Lafontaine and Schmidt, 2015), 16 of which have been recorded in North Carolina. Previously included in Subfamily Hadeninae but moved to the much expanded Noctuinae by Lafontaine and Schmidt. They also included it in Tribe Leucaniini along with Mythimna.

FIELD GUIDE DESCRIPTIONS:

ONLINE PHOTOS:

TECHNICAL DESCRIPTION, ADULTS:

TECHNICAL DESCRIPTION, IMMATURE STAGES:

ID COMMENTS:

DISTRIBUTION: Please refer to the dot map.

FLIGHT COMMENT: Please refer to the flight charts.

HABITAT:

FOOD: Larvae reportedly feed on grasses (Heppner, 2007).

OBSERVATION_METHODS:

NATURAL HERITAGE PROGRAM RANKS: G4 SNR [S3S4]

STATE PROTECTION: Has no legal protection, although permits are required to collect it on state parks and other public lands.

COMMENTS: