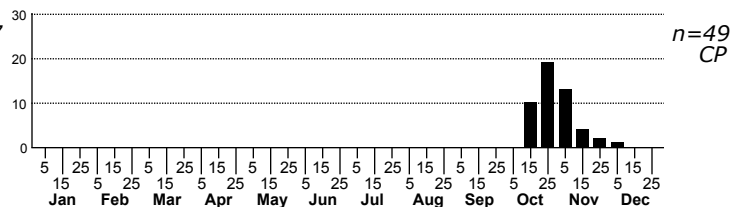
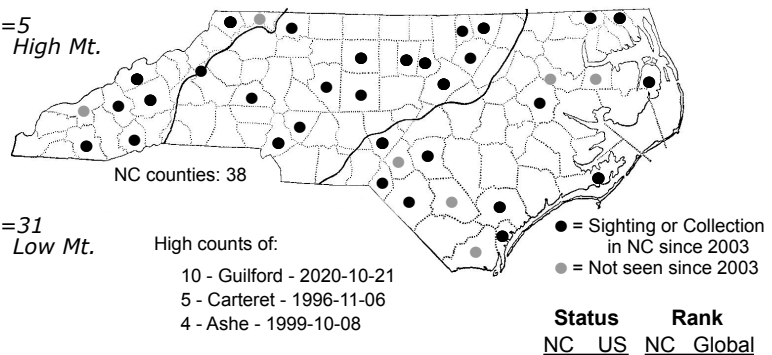
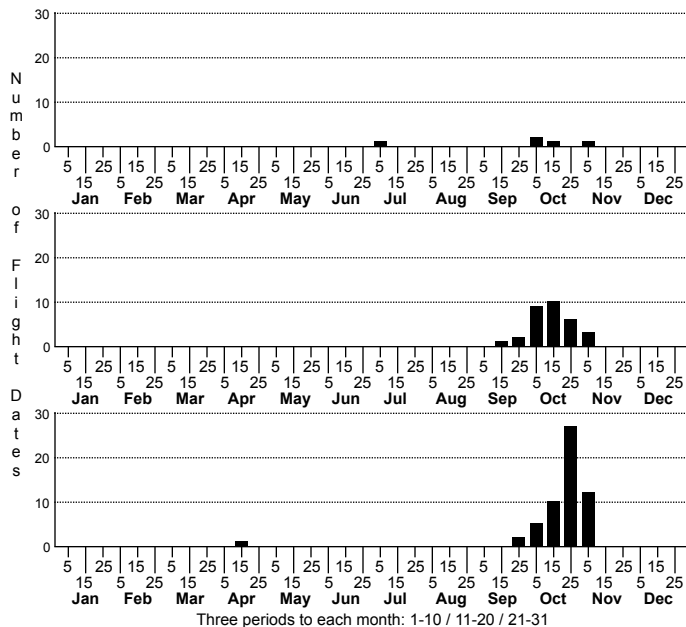


Choephora fungorum Bent-line Dart Moth



FAMILY: Noctuidae SUBFAMILY: Noctuinae TRIBE: Noctuini
 TAXONOMIC_COMMENTS: A monotypic genus from eastern North American which occurs across North Carolina.

FIELD GUIDE DESCRIPTIONS: Covell (1984); Beadle and Leckie (2012)

ONLINE PHOTOS:

TECHNICAL DESCRIPTION, ADULTS: Forbes (1954, as *Cerastes fungorum*); Lafontaine (1998)

TECHNICAL DESCRIPTION, IMMATURE STAGES: Forbes (1954)

ID COMMENTS: This species is unmistakable in color and pattern. It is a large, buff or fawn Noctuid, with single, fine, dark brown antemedian and postmedian lines. The regular spots are obsolete, but there is an irregular polygonal patch of dark brown located just inward from the middle of the costa.

DISTRIBUTION: Found throughout the state, from the Barrier Islands to the High Mountains

FLIGHT COMMENT: A sure sign of fall is the appearance of this species. It is single brooded.

HABITAT: Occurs in a variety of wooded and open habitats, including maritime dunes, Longleaf Pine woodlands, floodplain forests, lakeshores, Piedmont glades, and Mountain cove forests. We do not, however, have any records from Peatlands, a habitat type that contains few species of forbs.

FOOD: Thought to feed on a wide variety of forbs. Robinson et al. (2010) report records -- probably all from rearing -- from Dandelion, Clover, and Tobacco.

OBSERVATION_METHODS: Adults come readily to light but no information seems to exist as to whether they are attracted to bait or flowers. One might expect they would come to bait.

NATURAL HERITAGE PROGRAM RANKS: G5 [S5]

STATE PROTECTION: Has no legal protection, although permits are required to collect it on state parks and other public lands.

COMMENTS: Widely distributed, feeding on a variety of host plants -- some common -- and occupying an extensive range of habitats, this species appears to be secure within the state.