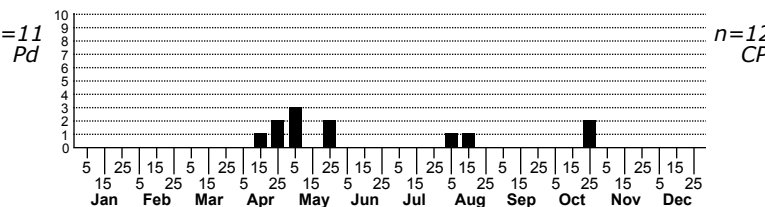
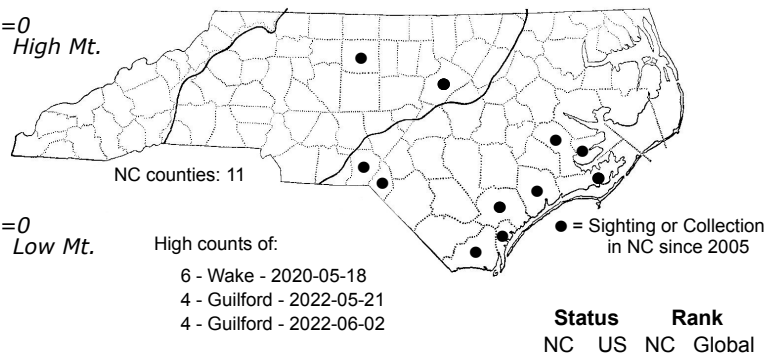
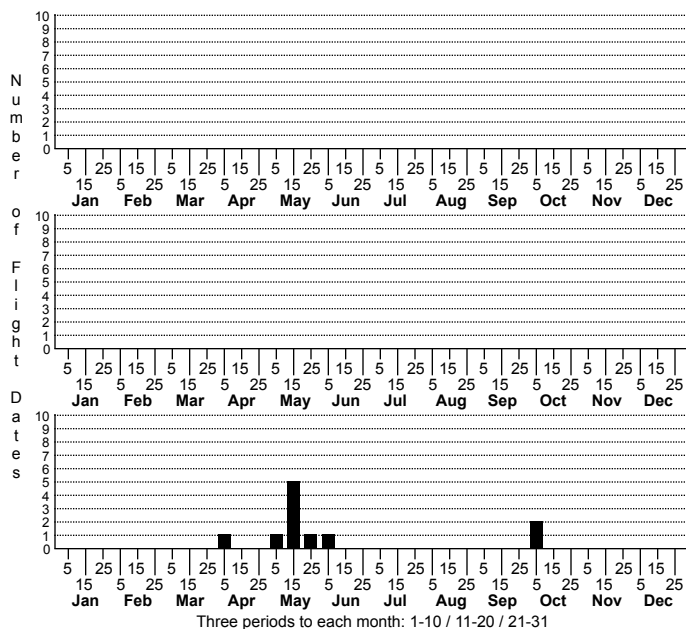


Glyphidocera floridanella None



FAMILY: Glyphidoceridae SUBFAMILY: [Glyphidocerinae] TRIBE:

TAXONOMIC_COMMENTS: <i>Glyphidocera</i> is a large but poorly studied genus with numerous undescribed species in the Neotropics, where they reach their greatest diversity. Adamski (2005) described 88 new species from Costa Rica alone. There are currently 11 described species in North America, and seven species in North Carolina. They are small to medium-sized moths and, with rare exceptions, vary from pale yellowish brown to dark brown. Most have few, if any, diagnostic markings on the wings. Host associations are unknown for almost all species, which suggests that they may be detritivores or fungivores that do not feed on living plants.

FIELD GUIDE DESCRIPTIONS:

ONLINE PHOTOS:

TECHNICAL DESCRIPTION, ADULTS: Busck (1901)

TECHNICAL DESCRIPTION, IMMATURE STAGES:

ID COMMENTS: The following description is based on the original description by Busck (1901). The antenna is light brown on the under side and dark fuscous above. In the male it is slightly serrate and deeply notched on upper side of the joint next to the basal one. The labial palp is long, recurved, smooth, and dark bronzy fuscous, with the third joint two-thirds as long as the second. The head and thorax are blackish fuscous, and the face a shade lighter. The forewing has a light yellowish fuscous ground color, and is thickly overlaid with extensive areas of dark blackish brown with a purple sheen. The dark scales are organized into three or four large, ill-defined, patches. The largest occupies nearly the entire basal third of the wing and is most prominent at the dorsal basal third. It has a broadly wavy margin with a patch of light yellow near the mid-point, and is often represented as two separate patches, with the more basal one smaller. The second forms an obscure, posteriorly oblique, band across the wing at about four-fifths the wing length, while a third occupies the apical portion of the wing. The intervals between these patches is filled with the lighter ground color, which is sprinkled with numerous dark scales. The hindwing is dark gray, and about twice as broad as the forewing. The legs are shining yellowish fuscous and shaded with darker fuscous.

DISTRIBUTION: <i>Glyphidocera floridanella</i> has a relatively small range that includes Alabama, Georgia, Florida and North Carolina. Populations are restricted to non-mountainous regions within these states. As of 2024, we have records from the eastern Piedmont and Coastal Plain, including the Sandhills and coastal communities farther east.

FLIGHT COMMENT: The adults are active year-round in Florida and from April through October elsewhere. As of 2024, our records extend from early-April through late-October. Local populations in North Carolina appear to have two broods per year.

HABITAT: The preferred habitats are poorly documented. In North Carolina, specimens have been found in residential neighborhoods in the Piedmont, in xeric Sandhill communities, and in beach dune and scrub communities.

FOOD: The hosts and feeding ecology of this species are undocumented. Except for one species, the hosts of the more than 100 described species of <i>Glyphidocera</i> are unknown. This suggest that the larvae do not feed on living plant foliage, and are perhaps detritivores or fungivores.

OBSERVATION_METHODS: The adults occasionally visit lights.

NATURAL HERITAGE PROGRAM RANKS: GNR [S2S3]

STATE PROTECTION:

COMMENTS: This species appears to be uncommon within the state, where it is at the northern limit of its range. More information is needed on its distribution, abundance, and habitat requirements before we can assess its conservation status.