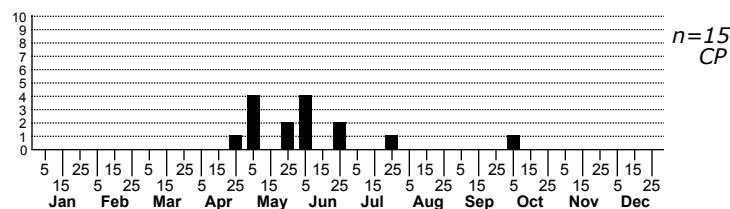
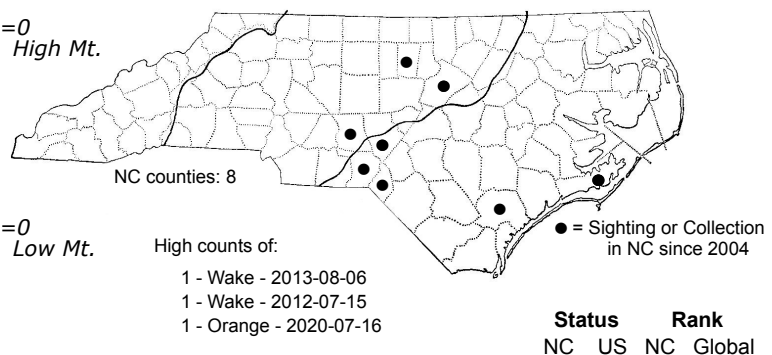
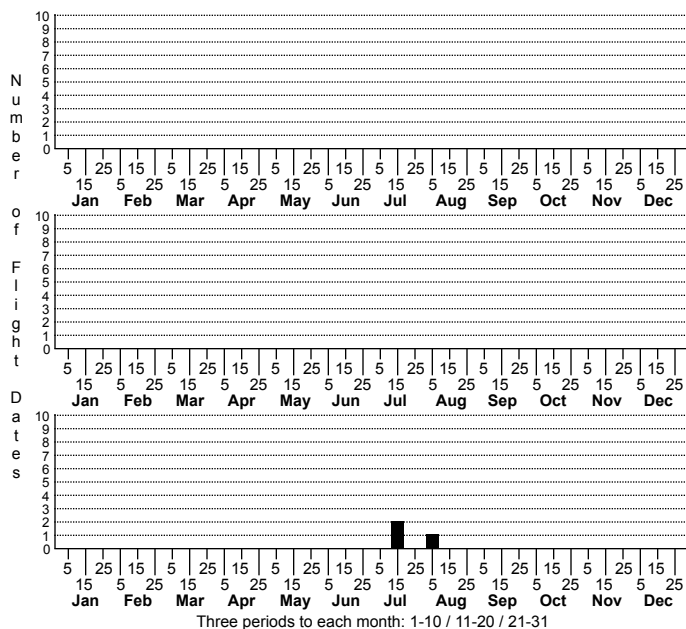


# *Calosima dianella* Eastern Pine Catkin Borer Moth



FAMILY: Blastobasidae SUBFAMILY: Blastobasinae TRIBE: Holcocerini  
 TAXONOMIC\_COMMENTS:

FIELD GUIDE DESCRIPTIONS:

ONLINE PHOTOS:

TECHNICAL DESCRIPTION, ADULTS: Dietz (1910); Clarke (1960)

TECHNICAL DESCRIPTION, IMMATURE STAGES:

ID COMMENTS: The following is based primarily on the description by Dietz (1910) and Clarke (1960; as *Holcocera lepidophaga*). The labial palp is slender, reaches to the antennal insertion, and is sordid white and dusted externally with fuscous. The third joint is three-fourths the length of the second. The antenna is slender and simple, and is creamy white to sordid white with narrow, dark annulations. The head, thorax, and forewing vary from silvery or creamy white to ochreous buff or even darker. The forewing of whitish specimens often has a faint clay-colored wash on the apical fourth. The hindwing tends to be concolorous with the forewing, but slightly lighter overall. The legs are silvery white, and often heavily dusted with fuscous. This species varies geographically. Many specimens are creamy white, but in some populations they are light brown or tannish overall. Some populations also have individuals with fine blackish specks or spots on the forewing. As of 2021, specimens that we have observed in North Carolina are creamy white. BOLD data suggests that this taxon may contain two cryptic species. Like so many members of the subfamily Blastobasinae, there is much work that needs to be done on this and related taxa. *Holcocera concolor* is very similar to the whitish forms, but is restricted to Canada and the New England states. The males have a notch at the base of the antenna, but otherwise must be separated using genitalia.

DISTRIBUTION: *Calosima dianella* is found primarily in the southeastern US. The range extends from eastern Texas and Oklahoma eastward through the Gulf Coast states to Florida, then northward to North Carolina and eastern Tennessee. As of 2021, our records are all from the eastern Piedmont and Coastal Plain.

FLIGHT COMMENT: Adults are active from January through August in Florida, and from March through July elsewhere outside of North Carolina. As of 2021, our records are from late June through early August.

HABITAT: Populations appear to be strongly dependent on Slash Pine and Longleaf Pine for successful reproduction. These species are most commonly found in habitats with sandy soils. Slash Pine is not native, but is widely planted for wood products in southeastern North Carolina. Longleaf Pine grows in sandy areas in both wet and dry situations. It is common in the Sandhills, in wet pine flatwoods and savanna, and many other communities. In the Piedmont, it sometimes grows on xeric slopes.

FOOD: Heppner (2003) listed Slash Pine (*Pinus elliottii*) and Longleaf Pine (*P. palustris*) as hosts. Specimens have been observed outside of the range of these species, which suggests that other pines may be used.

OBSERVATION\_METHODS:

NATURAL HERITAGE PROGRAM RANKS: GNR [SU]

STATE PROTECTION: Has no legal protection, although permits are required to collect it on state parks and other public lands.

COMMENTS: As of 2021, we have only three site records for this species, suggesting that it may be uncommon within the state. More detailed information on its distribution, abundance, and habitat requirements are needed before we can assess its conservation status.