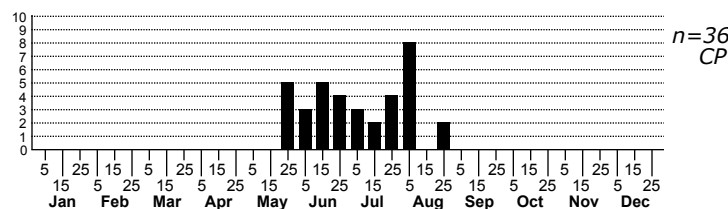
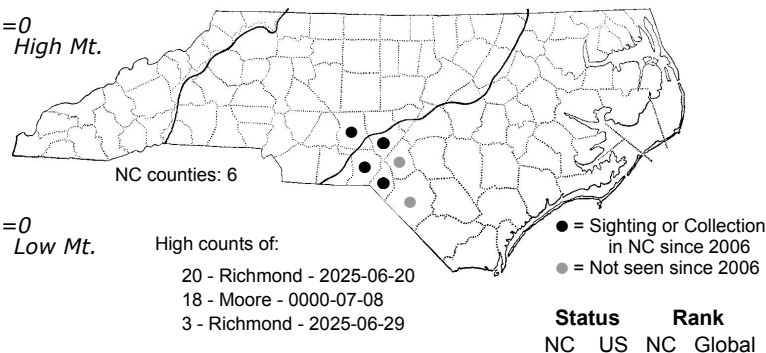


Pelochrista fraudabilis None



FAMILY: Tortricidae SUBFAMILY: Olethreutinae TRIBE: Eucosmini

TAXONOMIC_COMMENTS: *Pelochrista* is a large Holarctic genus of tortricids with around 75% of the 226 described species being native to North America (Wright and Gilligan, 2017). The highest species richness occurs in the western half of North America. The genus has a long and confusing taxonomic history, with many of the species formerly placed in the genus *Eucosma*. Gilligan et al. (2014) conducted a comprehensive phylogenetic analysis of *Pelochrista*, *Eucosma*, and related genera and redefined the genus *Eucosma* and *Pelochrista* based on differences in female genitalia. The great majority of *Pelochrista* species are known only from adults, which likely reflects the fact that the larvae of most species bore into stem bases and roots and are concealed from view. Members of the Asteraceae are the likely hosts for most species (Wright and Gilligan, 2017), but much work need to be done to identifying the hosts.

FIELD GUIDE DESCRIPTIONS:

ONLINE PHOTOS:

TECHNICAL DESCRIPTION, ADULTS: Heinrich (1923), Gilligan and Wright (2013)

TECHNICAL DESCRIPTION, IMMATURE STAGES:

ID COMMENTS: The following is based on the description by Gilligan and Wright (2013): The frons is creamy white, while the vertex, antenna, and thorax are straw yellow. The labial palp is creamy white with pale brown tints on the lateral surface of the second segment. The fore- and mid-legs are pale brown and the hind-legs creamy white, with the tarsi of all with weakly contrasting white annulations. The forewing ground color is straw yellow and is overlain with a metallic-gray subbasal and median bands that extend from the costa to the dorsum. A large circular ocelloid region extends from the tornus nearly to the costa and has the apical quadrant edged by a metallic-gray arc and the anterior portion filled with gray-brown scales with whitish apices. The ocellus consisting of four obscurely defined rows of black dots on a creamy white field, with transverse metallic-gray bars at the proximal, medial, and distal positions. The subcostal area anterior to the ocelloid region is crossed by metallic-gray striae and/or fragments, and the distal one-half of the costa has obscure whitish strigulae. The fringe is brown and the hindwing is brownish gray.

Pelochrista fraudabilis is rather distinctive in having a light straw-color, two fascias (crossbands) on the forewing, and a conspicuously marked ocelloid region. *Pelochrista fratrueolis* is similar, but has an orange ground color on the forewing, a dark basal patch, and a single fascia in the basal half of the wing.

DISTRIBUTION: *Pelochrista fraudabilis* is found in Coastal Plain habitats from New Jersey southward through the Atlantic Coast states to northern Florida, then westward to Louisiana. As of 2022, our records are all from the Sandhills and vicinity.

FLIGHT COMMENT: Gilligan and Wright (2013) examined specimens that were collected from late May through mid-August. As of 2022, our records extend from early June to early August. The type series as collected from Southern Pines from June 1 to July 23 (Heinrich, 1923).

HABITAT: In North Carolina our records are all from sandy, xeric habitats that often support Longleaf Pine or xeric adapted hardwoods. The sites all have a well-developed herbaceous ground cover.

FOOD: The hosts are undocumented.

OBSERVATION_METHODS: The adults are attracted to lights.

NATURAL HERITAGE PROGRAM RANKS: GNR S1S3

STATE PROTECTION: Has no legal protection, although permits are required to collect it on state parks and other public lands.

COMMENTS: This species is uncommon throughout its range, but the hosts and larval life history are undocumented. In North Carolina, it appears to be restricted to the Sandhills and vicinity in areas with sandy soils.