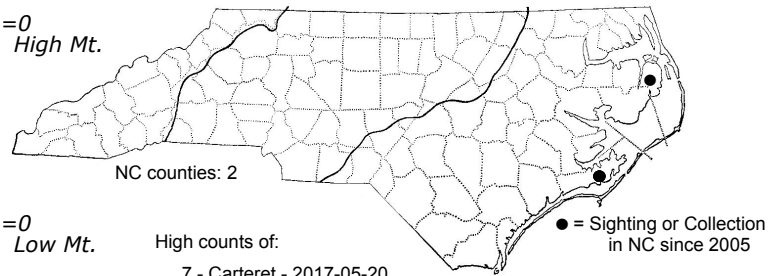
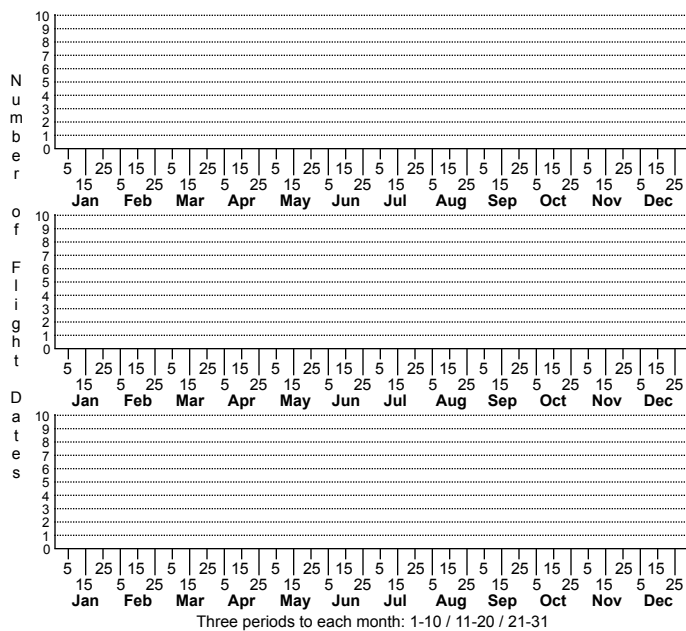


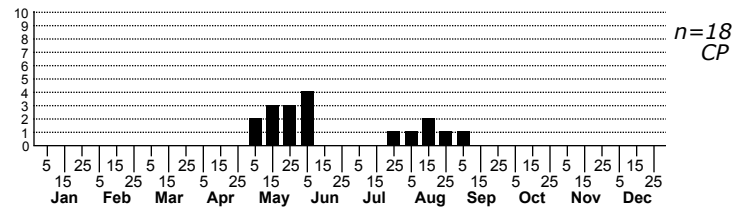
Choristoneura houstonana Juniper Budworm Moth



High counts of:

- 7 - Carteret - 2017-05-20
- 4 - Carteret - 2024-05-21
- 3 - Carteret - 2023-05-10

Status Rank
NC US NC Global



FAMILY: Tortricidae SUBFAMILY: Tortricinae TRIBE: Archipini
TAXONOMIC_COMMENTS:

FIELD GUIDE DESCRIPTIONS:

ONLINE PHOTOS:

TECHNICAL DESCRIPTION, ADULTS:

TECHNICAL DESCRIPTION, IMMATURE STAGES: Heinrichs and Thompson (1968)

ID COMMENTS: This is a distinctive species with its set of raised scale patches on the forewing. The head, palps, antennae and thorax are light rusty brown, and the forewing is checkered with a series of raised, plate-like scale patches that can be rosy brown, rusty brown, yellowish-brown or light golden-white. The patches are delineated by darker lines around their perimeters to produce a reticulated pattern. The hindwing varies from white to light grayish-brown, with a slightly paler fringe.

DISTRIBUTION: The range includes two allopatric groups: an Atlantic coastal group that occurs from New Hampshire southward to North Carolina, and a more western group that ranges from Mississippi and western Tennessee westward to Arizona and California, and northward to Nebraska, Kansas, and Arkansas. As of 2023, all of our records are from Ft. Macon State Park in Carteret County.

FLIGHT COMMENT: The adults have been observed from March through November in different areas of the range, with most from June through September. Local populations appear to have one or two broods per year. As of 2023, we have records from May through early June, and again from August through early September, which suggests two broods per year in North Carolina.

HABITAT: Populations in the Southwest are associated with pinyon-juniper woodlands and those in the east with Eastern Red Cedar and Southern Red Cedar. As of 2023, all of our records come from dunes on a barrier island where Southern Red Cedar is abundant.

FOOD: The larvae feed on several species of junipers (Heinrichs and Thompson, 1968; Brown et al., 2008) and rarely on Eastern Arbor-vitae (*Thuja orientalis*). Eastern Red Cedar (*Juniperus virginiana*) is an important host in the east. Other known host include Chinese juniper (*J. chinensis*) and Rocky Mountain Juniper (*J. scopulorum*). At the one site where this species has been observed in North Carolina, it is associated with Southern Red Cedar (*J. silicicola*).

OBSERVATION_METHODS:

NATURAL HERITAGE PROGRAM RANKS: GNR SU

STATE PROTECTION: Has no legal protection, although permits are required to collect it on state parks and other public lands.

COMMENTS: