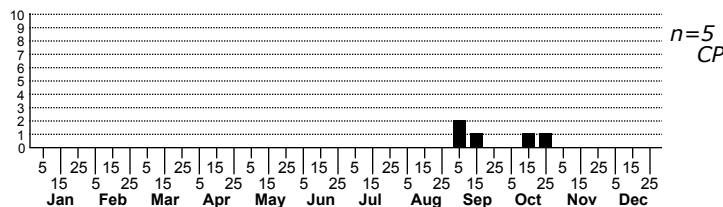
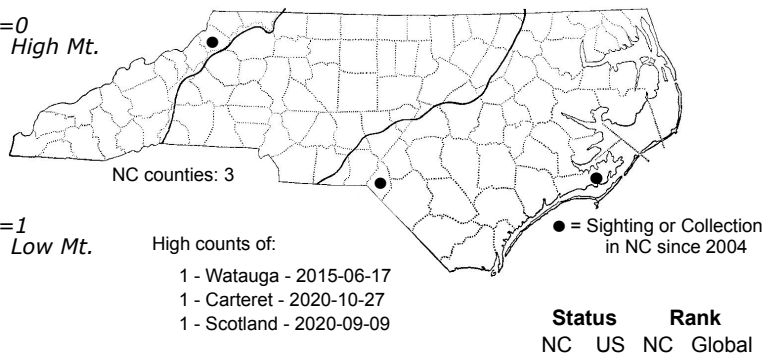
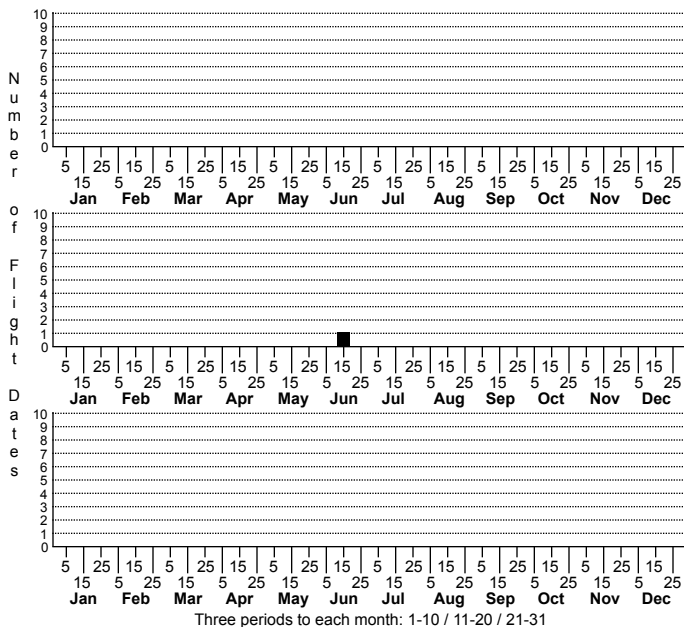


# *Cochylichroa hospes* Banded Sunflower Moth



FAMILY: Tortricidae SUBFAMILY: Tortricinae TRIBE: Cochylini  
 TAXONOMIC\_COMMENTS:

FIELD GUIDE DESCRIPTIONS: Beadle and Leckie (2012)

ONLINE PHOTOS:

TECHNICAL DESCRIPTION, ADULTS:

TECHNICAL DESCRIPTION, IMMATURE STAGES:

ID COMMENTS:

DISTRIBUTION: Please refer to the dot map.

FLIGHT COMMENT: Please refer to the flight charts.

HABITAT:

FOOD: Larvae reportedly feed on sunflower (Beadle & Leckie, 2018).

OBSERVATION\_METHODS:

NATURAL HERITAGE PROGRAM RANKS:

STATE PROTECTION: Has no legal protection, although permits are required to collect it on state parks and other public lands.

COMMENTS: