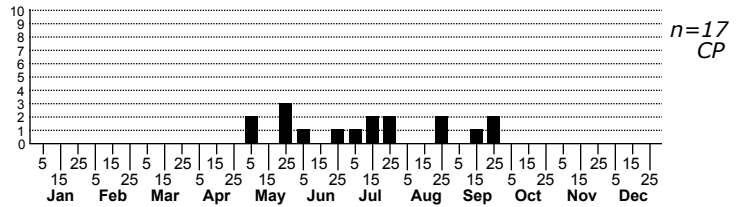
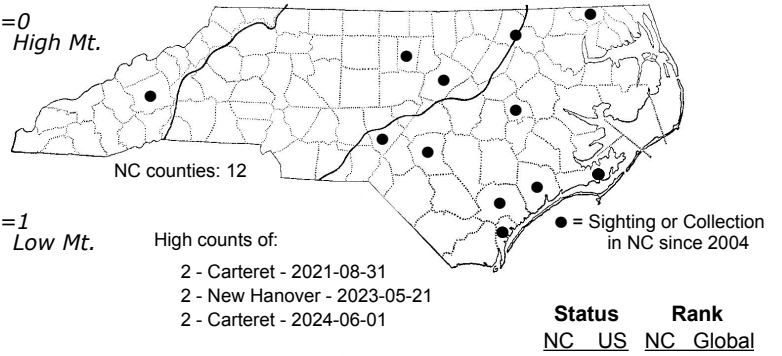
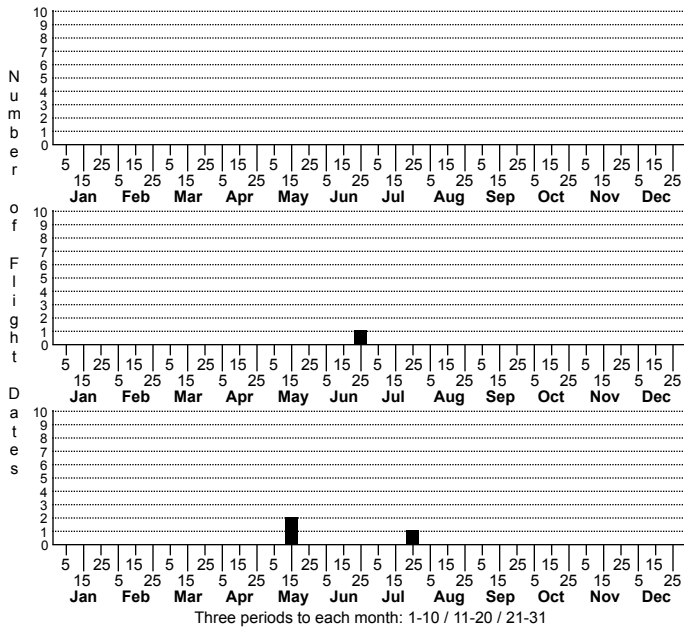


Atropisia oenotherana Primrose Cochyliid



FAMILY: Tortricidae SUBFAMILY: Tortricinae TRIBE: Cochylini
 TAXONOMIC_COMMENTS:

FIELD GUIDE DESCRIPTIONS: Covell (1984; as *Conchylus oenotherana*); Beadle and Leckie (2012)

ONLINE PHOTOS:

TECHNICAL DESCRIPTION, ADULTS:

TECHNICAL DESCRIPTION, IMMATURE STAGES:

ID COMMENTS:

DISTRIBUTION: Please refer to the dot map.

FLIGHT COMMENT: Please refer to the flight charts.

HABITAT:

FOOD: Host plants are poorly documented, but larvae are believed to feed on *Oenothera* species. There is a BugGuide record for a larva on Common Evening-primrose (*O. biennis*). We do not have any feeding records in North Carolina.

OBSERVATION_METHODS:

NATURAL HERITAGE PROGRAM RANKS:

STATE PROTECTION: Has no legal protection, although permits are required to collect it on state parks and other public lands.

COMMENTS: