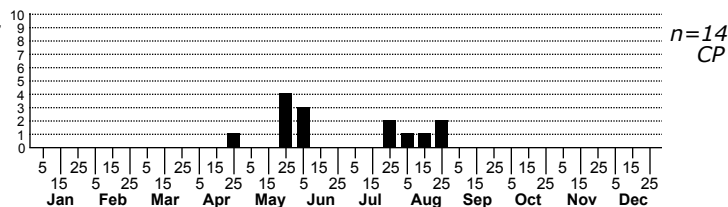
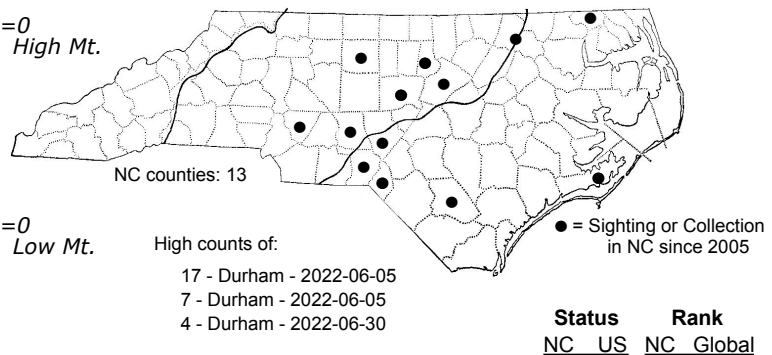
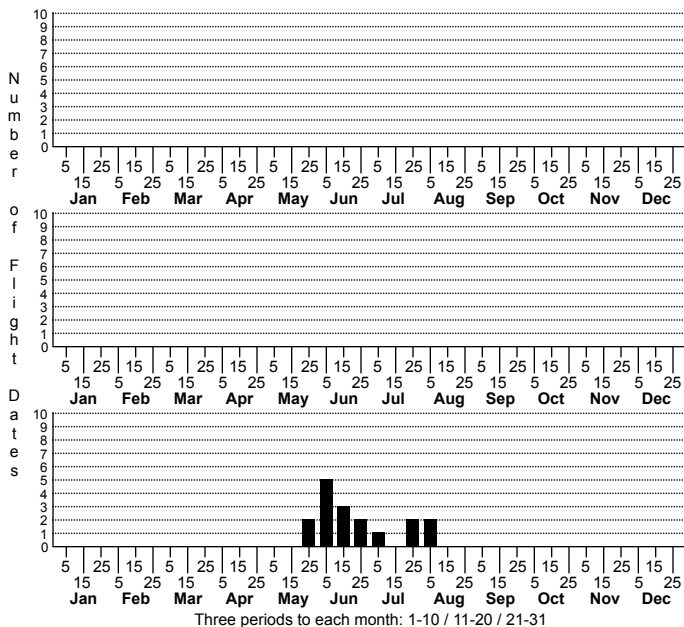


*Xubida panalope* Many-lined Grass-veneer



FAMILY: Crambidae SUBFAMILY: Crambinae TRIBE: Haimbachiini  
 TAXONOMIC\_COMMENTS:

FIELD GUIDE DESCRIPTIONS:

ONLINE PHOTOS:

TECHNICAL DESCRIPTION, ADULTS: Forbes (1923); Klots (1970)

TECHNICAL DESCRIPTION, IMMATURE STAGES:

ID COMMENTS: A small, cream-colored Crambid. The veins are marked with fine dark lines, with heavier dark streaks in the interspaces (Forbes, 1923); the streak opposite the cell is faint, however, compared to those in the other interspaces (Dyar, cited by Klots, 1970). Transverse lines are absent but there is a series of dark spots along the terminus. The discal spot is also dark but ringed with white. The hindwings are nearly white. *Xubida linearella* is similar in pattern and color but the veins in the interspaces beyond the cell are all similar in shading (Klots, 1970). *Eoreuma densellus* is also similar in size, color, and pattern but the veins are white and bounded by dark.

DISTRIBUTION: Please refer to the dot map.

FLIGHT COMMENT: Please refer to the flight charts.

HABITAT: The majority of our records come from wet, open lakeshore or riparian habitats.

FOOD: Larval host plants appear to be unknown. Klots (1970) states that many species in this group are borers in the soft stems of monocots.

OBSERVATION\_METHODS:

NATURAL HERITAGE PROGRAM RANKS: GNR S3S4

STATE PROTECTION: Has no legal protection, although permits are required to collect it on state parks and other public lands.

COMMENTS: