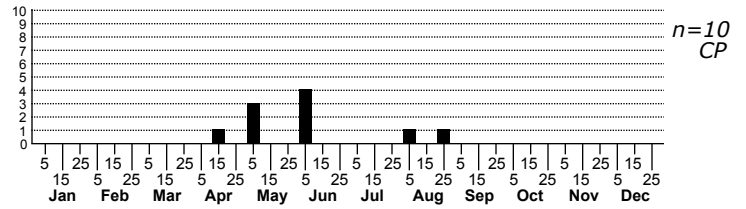
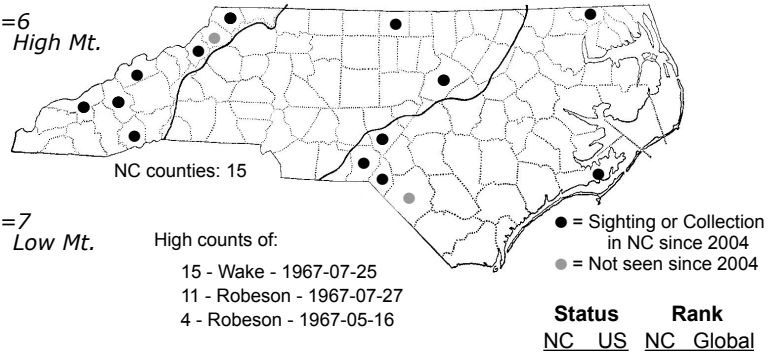
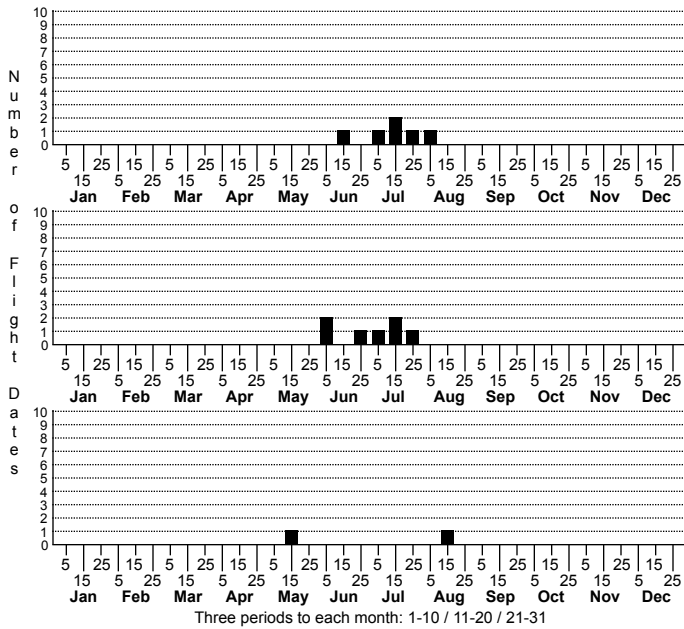


Acrobasis indigenella Leaf Crumpler Moth



FAMILY: Pyralidae SUBFAMILY: Phycitinae TRIBE: Phycitini
 TAXONOMIC_COMMENTS:

FIELD GUIDE DESCRIPTIONS: Beadle and Leckie (2012)

ONLINE PHOTOS:

TECHNICAL DESCRIPTION, ADULTS: Neunzig (1996)

TECHNICAL DESCRIPTION, IMMATURE STAGES:

ID COMMENTS: In *indigenella* the medial band runs at an angle, in *vaccinni* it is perpendicular to the costa (J.B. Sullivan, pers. obs.).

DISTRIBUTION: Please refer to the dot map.

FLIGHT COMMENT: Please refer to the flight charts.

HABITAT: Our records come from a wide range of habitats, including open, herb-dominated fields to high elevation hardwood forests, to sandhills.

FOOD: Larvae feed on Apple and on most other shrubby members of the Rosaceae (Forbes, 1923). Neunzig (1972) lists the following: *Crataegus*, *Malus*, *Prunus*, *Pyracantha*, *Cotoneaster*, *Cydonia*, *Pyrus*, and *Rosa*.

OBSERVATION_METHODS:

NATURAL HERITAGE PROGRAM RANKS: GNR S3S5

STATE PROTECTION: Has no legal protection, although permits are required to collect it on state parks and other public lands.

COMMENTS: