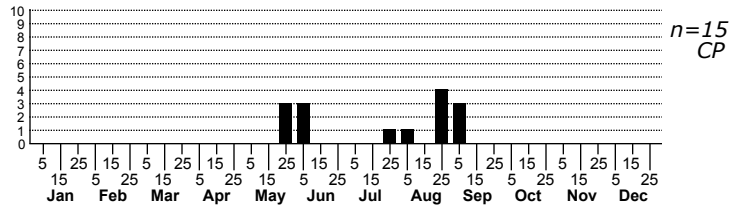
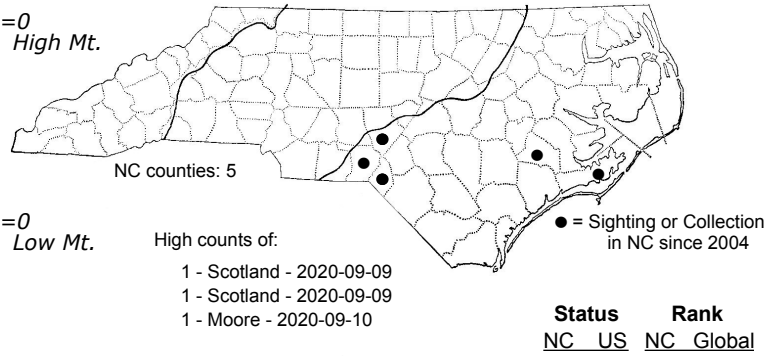


*Sciota subfuscella* Striped Sumac Leafroller Moth



FAMILY: Pyralidae SUBFAMILY: Phycitinae TRIBE: Phycitini  
 TAXONOMIC\_COMMENTS:

FIELD GUIDE DESCRIPTIONS:  
 ONLINE PHOTOS:  
 TECHNICAL DESCRIPTION, ADULTS:  
 TECHNICAL DESCRIPTION, IMMATURE STAGES:

ID COMMENTS:

DISTRIBUTION: Please refer to the dot map.

FLIGHT COMMENT: Please refer to the flight charts.

HABITAT:

FOOD: *Sciota subfuscella* appears to specialize on sumacs (Prentice 1966; Heppner, 2007; Robinson et al., 2010). Beadle and Leckie (2012) also list Black Locust (*Robinia pseudoacacia*), which needs to be verified with additional observations. Sumac species that are used include Winged Sumac (*Rhus copallinum*) and Staghorn Sumac (*R. typhina*).

OBSERVATION\_METHODS:

NATURAL HERITAGE PROGRAM RANKS: GNR S2S3

STATE PROTECTION:

COMMENTS: