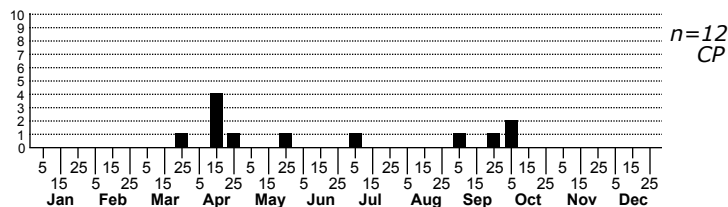
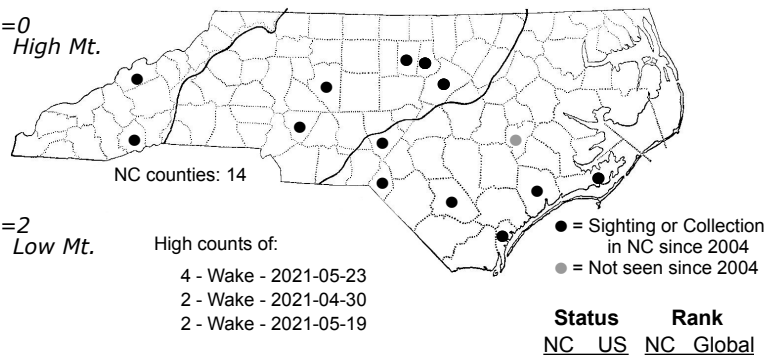
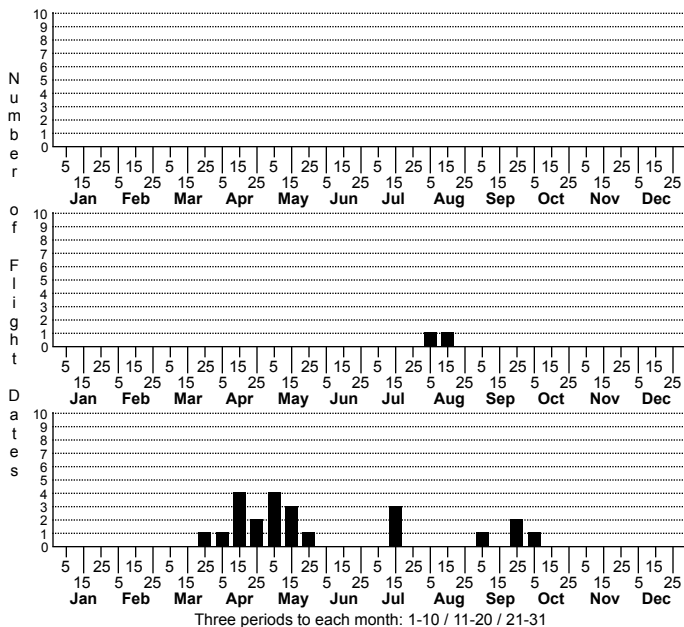


Dioryctria clarioralis Blister Coneworm Moth



FAMILY: Pyralidae SUBFAMILY: Phycitinae TRIBE: Phycitini
 TAXONOMIC_COMMENTS:

FIELD GUIDE DESCRIPTIONS:
 ONLINE PHOTOS:
 TECHNICAL DESCRIPTION, ADULTS: Neunzig (1996)
 TECHNICAL DESCRIPTION, IMMATURE STAGES:

ID COMMENTS:

DISTRIBUTION: Please refer to the dot map.

FLIGHT COMMENT: Please refer to the flight charts.

HABITAT:

FOOD: Larvae feed on pines, including Shortleaf Pine (<i>Pinus echinata</i>), Longleaf Pine (<i>P. palustris</i>), and Loblolly Pine (<i>P. taeda</i>) (Baker, 1972).

OBSERVATION_METHODS:

NATURAL HERITAGE PROGRAM RANKS:

STATE PROTECTION: Has no legal protection, although permits are required to collect it on state parks and other public lands.

COMMENTS: