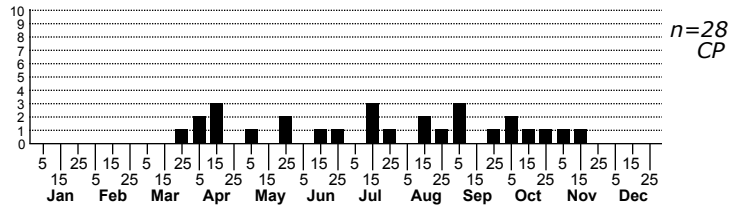
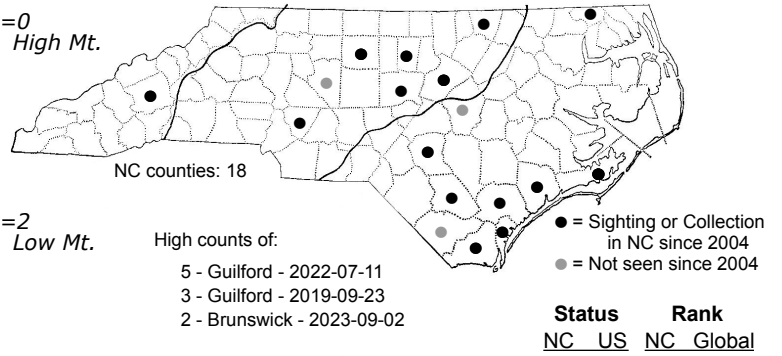
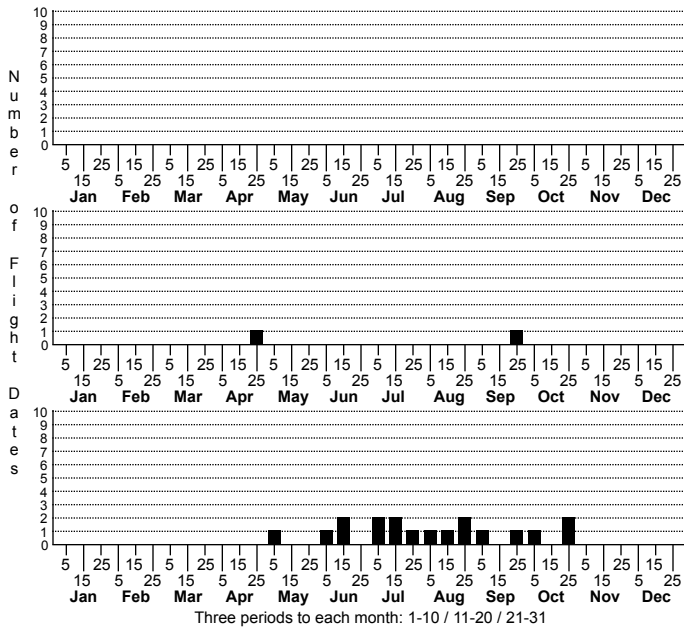


Elasmopalpus lignosella Lesser Cornstalk Borer Moth



FAMILY: Pyralidae SUBFAMILY: Phycitinae TRIBE: Phycitini
TAXONOMIC_COMMENTS:

FIELD GUIDE DESCRIPTIONS: Beadle and Leckie (2012)

ONLINE PHOTOS:

TECHNICAL DESCRIPTION, ADULTS: Neunzig (1996)

TECHNICAL DESCRIPTION, IMMATURE STAGES:

ID COMMENTS:

DISTRIBUTION: Please refer to the dot map.

FLIGHT COMMENT: Please refer to the flight charts.

HABITAT:

FOOD: Larvae are polyphagous, consuming many crop species and grasses. Reported hosts include onion, peanut, oats, beets, cabbage, turnip, peppers, Bermuda Grass, nutsedges, Sweet Potato, rice, beans, tomatoes, wheat, and corn (Gill et al., 2000).

OBSERVATION_METHODS:

NATURAL HERITAGE PROGRAM RANKS:

STATE PROTECTION: Has no legal protection, although permits are required to collect it on state parks and other public lands.

COMMENTS: