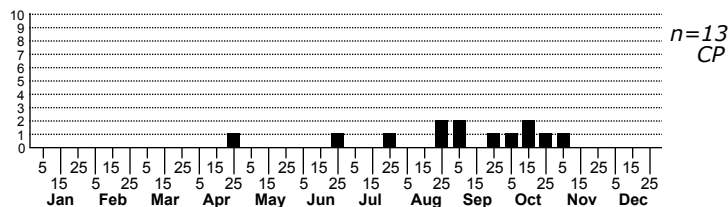
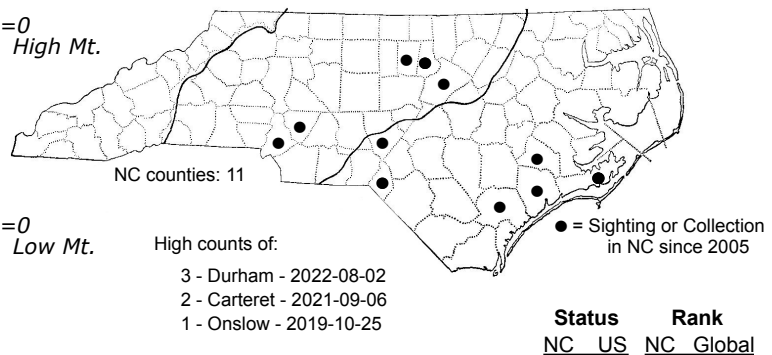
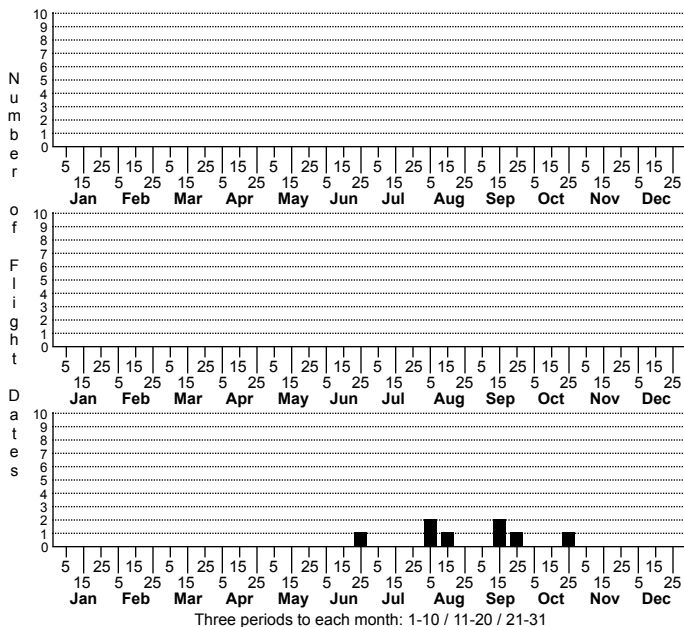


Macrorrhinia endonephele Alligatorweed Stemborer Moth



FAMILY: Pyralidae SUBFAMILY: Phycitinae TRIBE: Phycitini
 TAXONOMIC_COMMENTS:

FIELD GUIDE DESCRIPTIONS:
 ONLINE PHOTOS:
 TECHNICAL DESCRIPTION, ADULTS:
 TECHNICAL DESCRIPTION, IMMATURE STAGES:

ID COMMENTS:

DISTRIBUTION: Please refer to the dot map.

FLIGHT COMMENT: Please refer to the flight charts.

HABITAT: We have records mainly from the open, marshy habitats where Alligator-weed is found.

FOOD: Larvae feed primarily or exclusively on Alligator-weed (*Alternanthera philoxeroides*) (Brown, 1973).

OBSERVATION_METHODS:

NATURAL HERITAGE PROGRAM RANKS: GNR SE

STATE PROTECTION:

COMMENTS: Exotic - introduced in the 1970s from South America to control Alligator-weed, its native host plant (Brown, 1973).