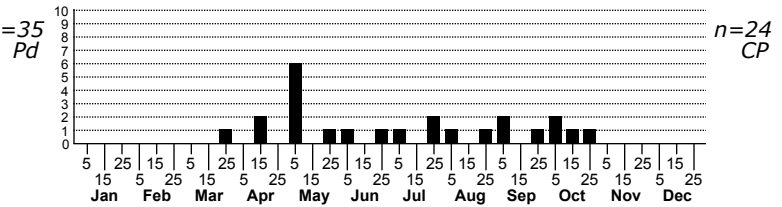
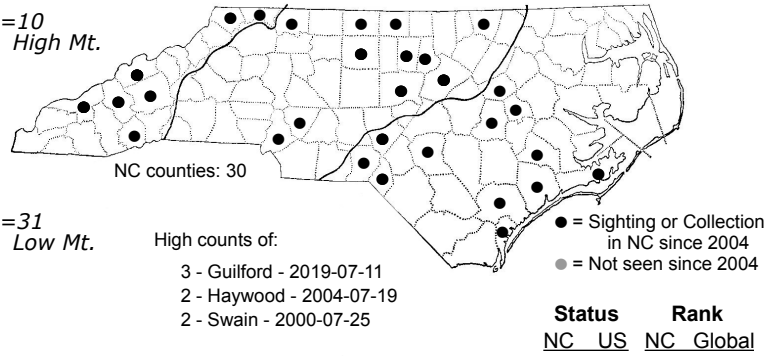
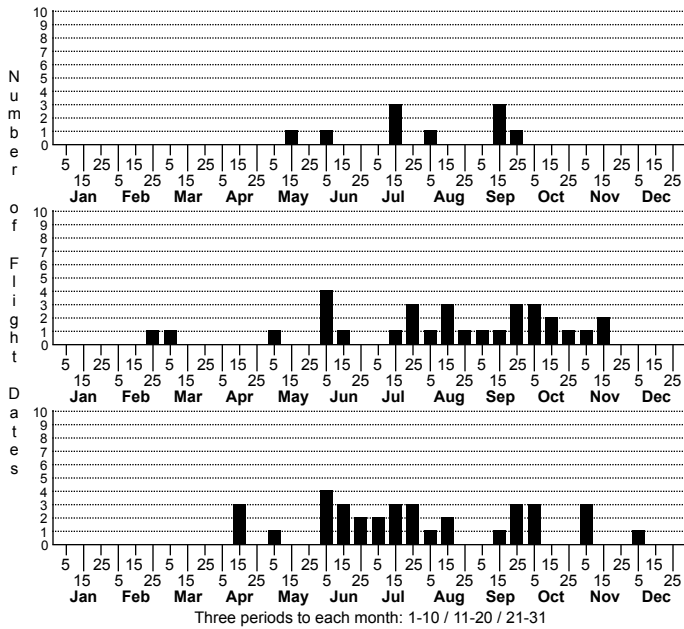


Vitula edmandsii Dried Fruit Moth



FAMILY: Pyralidae SUBFAMILY: Phycitinae TRIBE: Phycitini
 TAXONOMIC_COMMENTS:

FIELD GUIDE DESCRIPTIONS: Beadle and Leckie (2012)

ONLINE PHOTOS:

TECHNICAL DESCRIPTION, ADULTS: Neunzig (1996)

TECHNICAL DESCRIPTION, IMMATURE STAGES:

ID COMMENTS: "Similar to other mainly gray phycitines, but can be told with good photo" (Scholtens, 2017)

DISTRIBUTION: Please refer to the dot map.

FLIGHT COMMENT: Please refer to the flight charts.

HABITAT:

FOOD: Larvae are detritivores on plant and animal materials (Neunzig, 1996). They have been found in the nests of bumblebees, where they feed on wax, pollen, and the dead larvae of the bees. They also feed on dried fruit and on pine cones.

OBSERVATION_METHODS:

NATURAL HERITAGE PROGRAM RANKS: GNR S4S5

STATE PROTECTION: Has no legal protection, although permits are required to collect it on state parks and other public lands.

COMMENTS: