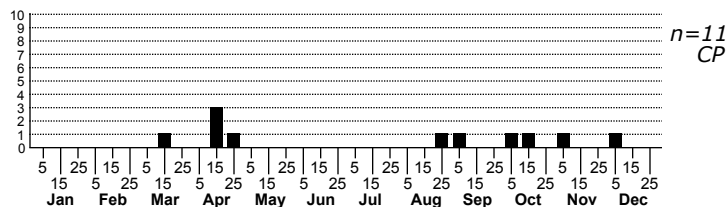
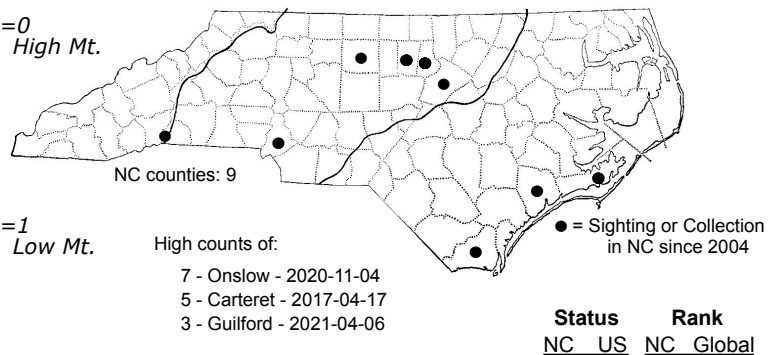
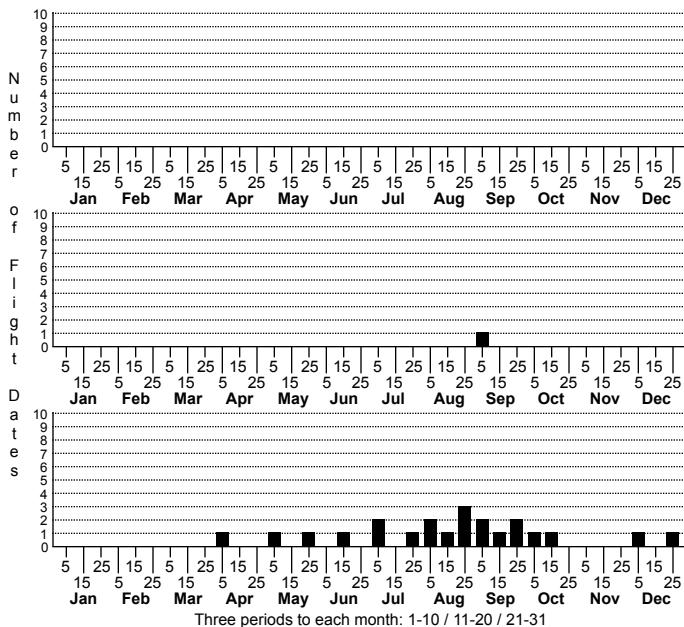


Pselnophorus belfragei Belfrage's Plume Moth



FAMILY: Pterophoridae SUBFAMILY: TRIBE:
 TAXONOMIC_COMMENTS:

FIELD GUIDE DESCRIPTIONS:
 ONLINE PHOTOS:
 TECHNICAL DESCRIPTION, ADULTS:
 TECHNICAL DESCRIPTION, IMMATURE STAGES:

ID COMMENTS: Forewings vary from whitish with scattered brown and gray scales to dark gray-brown with some whitish scales (Barnes and Lindsey, 1921). Spots are variable but there is usually one in the middle of the cell; an oblique streak before the cleft; two spots on the costa and one at the apex of both lobes. The abdomen is the most distinctive feature of this species. The ground color varies from light ochraceous to dark brown, with two conspicuous "silky white" lines located subdorsally, bordered "more or less" by black dashes. Similar lines exist along the sides.

DISTRIBUTION: Please refer to the dot map.
 FLIGHT COMMENT: Please refer to the flight charts.
 HABITAT:

FOOD: Larvae have apparently not been observed in the wild, but captive-reared larvae fed on Carolina Pony's-foot (*Dichondra carolinensis*) (Matthews et al., 1990), a species that occurs in areas where this moth has been observed in North Carolina

OBSERVATION_METHODS:
 NATURAL HERITAGE PROGRAM RANKS:

STATE PROTECTION: Has no legal protection, although permits are required to collect it on state parks and other public lands.
 COMMENTS: