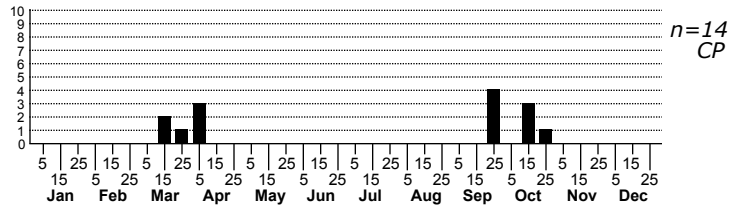
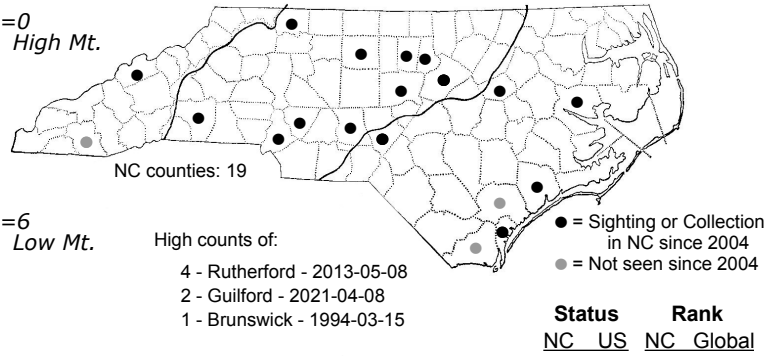
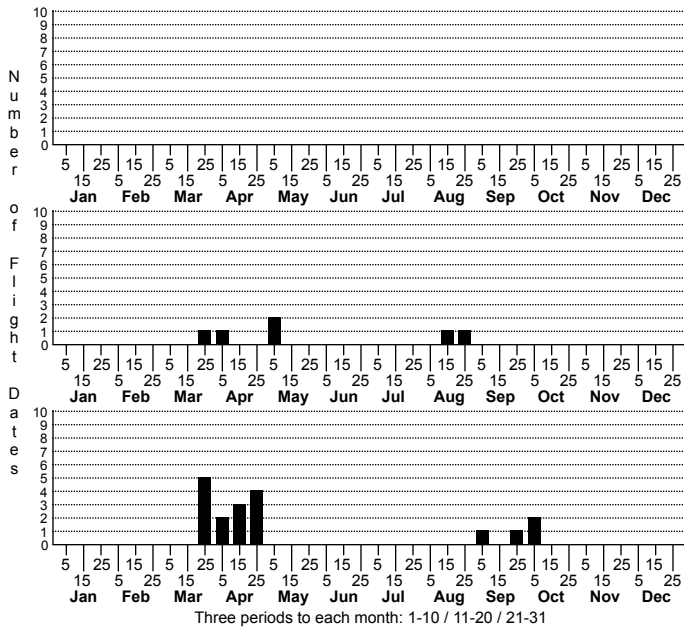


Eupithecia peckorum Peck's Pug Moth



FAMILY: Geometridae SUBFAMILY: Larentiinae TRIBE: Eupitheciini
 TAXONOMIC_COMMENTS:

FIELD GUIDE DESCRIPTIONS:
 ONLINE PHOTOS:
 TECHNICAL DESCRIPTION, ADULTS: Rindge (1985)
 TECHNICAL DESCRIPTION, IMMATURE STAGES:

ID COMMENTS: The forewings have a sharply pointed apex and a rounded outer margin. The ground color is orange brown ground color and the lines are dark chocolate brown. The basal line is curved and the antemedian is angled below the costa and then becomes indistinct (Rindge, 1985). The postmedian line is the most prominent marking, being more strongly represented on the upper portion of the wing. The discal dash is elongate and there may be a series of small subterminal dots and a larger spot above the outer angle. The hindwings have the anterior portion grayish, changing to brown posteriorly. The maculation consists of a discal spot and a broad extradiscal line.

DISTRIBUTION: Please refer to the dot map.
 FLIGHT COMMENT: Please refer to the flight charts.
 HABITAT:

FOOD: Larvae feed on many woody and herbaceous plants (Ferris, 2017); reared by Knudson on the petals of Rubus.
 OBSERVATION_METHODS:

NATURAL HERITAGE PROGRAM RANKS: G4 [S3S4]

STATE PROTECTION: Has no legal protection, although permits are required to collect it on state parks and other public lands.

COMMENTS: