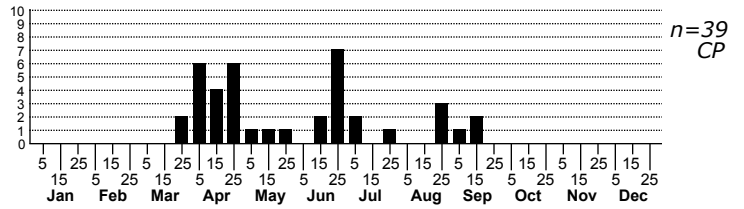
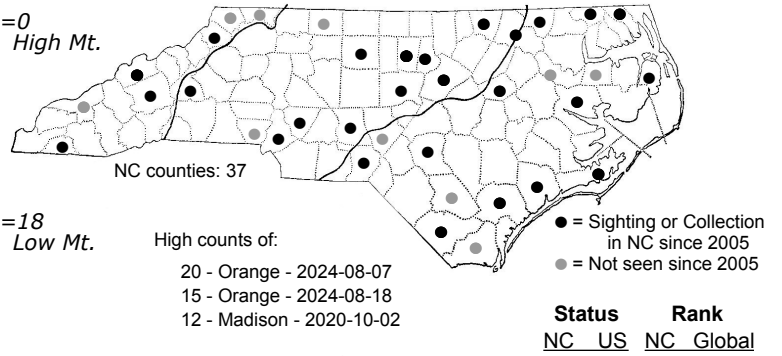
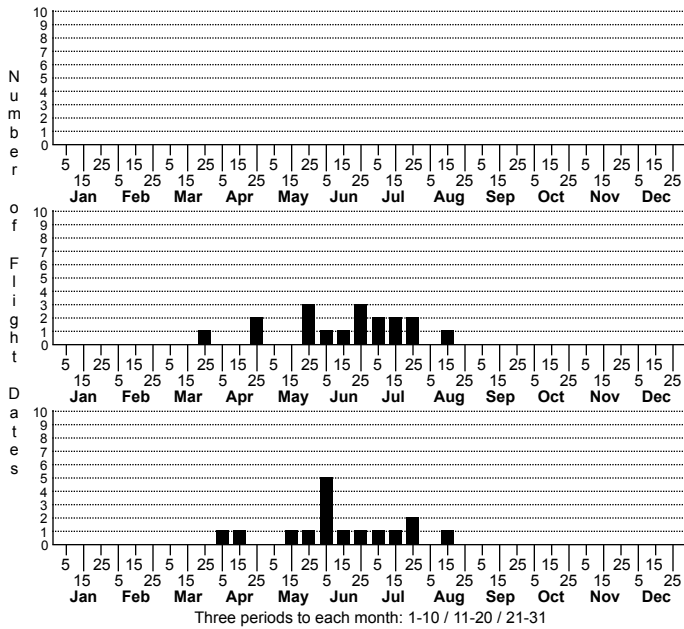


*Clostera inclusa* Angle-lined Prominent



FAMILY: Notodontidae SUBFAMILY: Pygaerinae TRIBE:  
 TAXONOMIC\_COMMENTS:

FIELD GUIDE DESCRIPTIONS: Covell (1984); Beadle and Leckie (2012)

ONLINE PHOTOS:

TECHNICAL DESCRIPTION, ADULTS:

TECHNICAL DESCRIPTION, IMMATURE STAGES:

ID COMMENTS:

DISTRIBUTION: Please refer to the dot map.

FLIGHT COMMENT: Please refer to the flight charts.

HABITAT: Most of our records come from wetlands where willows are present but where cottonwoods are absent or unlikely. A few, however, come from floodplains where cottonwoods are common.

FOOD: Larvae reportedly feed on aspen, poplar, and willow (Wagner, 2005). Many other genera are listed as potential hosts, but require verification. In North Carolina, larvae have been observed on Black Willow (<i>Salix nigra</i>), Coastal Plain Willow (<i>S. caroliniana</i>), Silky Willow (<i>S. sericea</i>), and Eastern Cottonwood (<i>Populus deltoides</i>).

OBSERVATION\_METHODS:

NATURAL HERITAGE PROGRAM RANKS: G5 SNR [S4S5]

STATE PROTECTION: Has no legal protection, although permits are required to collect it on state parks and other public lands.

COMMENTS: