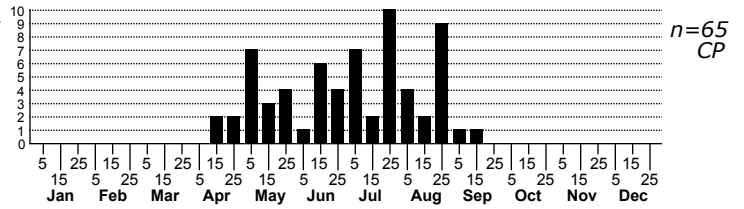
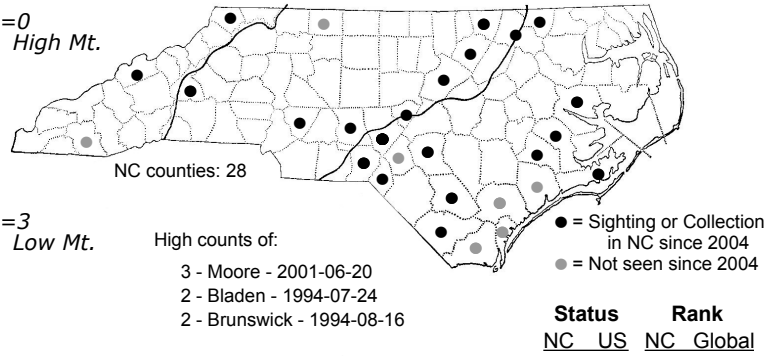
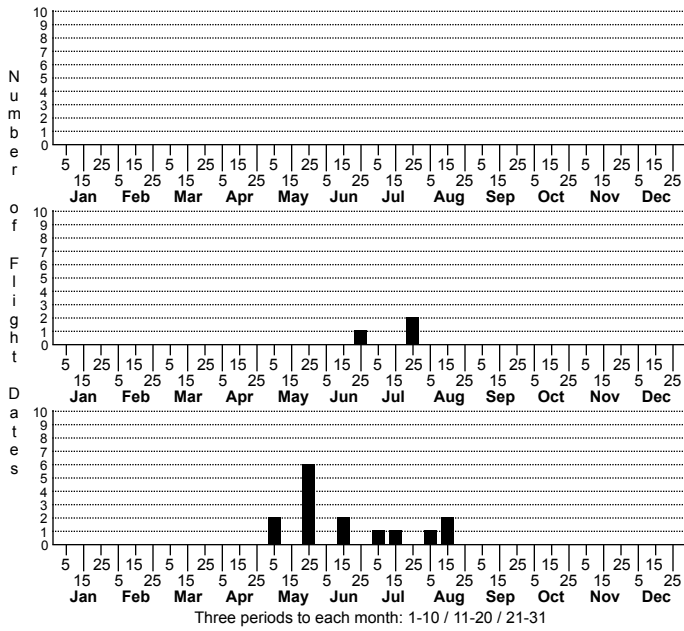


*Hyparpax aurora* Pink Prominent



FAMILY: Notodontidae SUBFAMILY: Heterocampinae TRIBE:  
TAXONOMIC\_COMMENTS:

FIELD GUIDE DESCRIPTIONS: Covell (1984); Beadle and Leckie (2012)

ONLINE PHOTOS:

TECHNICAL DESCRIPTION, ADULTS:

TECHNICAL DESCRIPTION, IMMATURE STAGES:

ID COMMENTS:

DISTRIBUTION: Please refer to the dot map.

FLIGHT COMMENT: Please refer to the flight charts.

HABITAT: Inhabits barrens, woodlands, and forests over its entire range (Wagner, 2005). North Carolina records come primarily from sandhills habitats in the Coastal Plain. We also have records from dry woodlands in the Piedmont and Mountains, but with some records coming from wet-to-mesic forests as well.

FOOD: Larvae feed on oaks, especially Bear Oak northward (Wagner, 2005)

OBSERVATION\_METHODS:

NATURAL HERITAGE PROGRAM RANKS: G5 S4

STATE PROTECTION: Has no legal protection, although permits are required to collect it on state parks and other public lands.

COMMENTS: