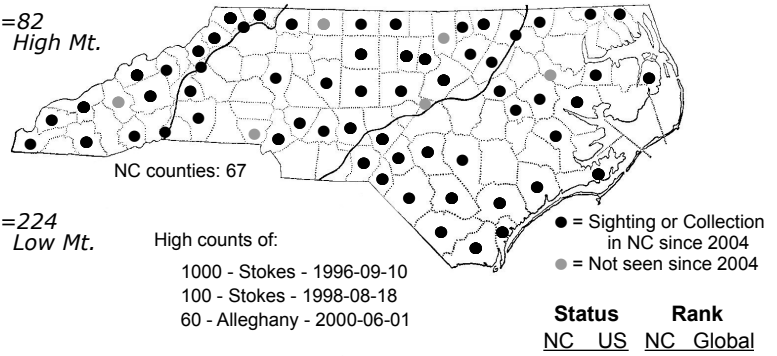
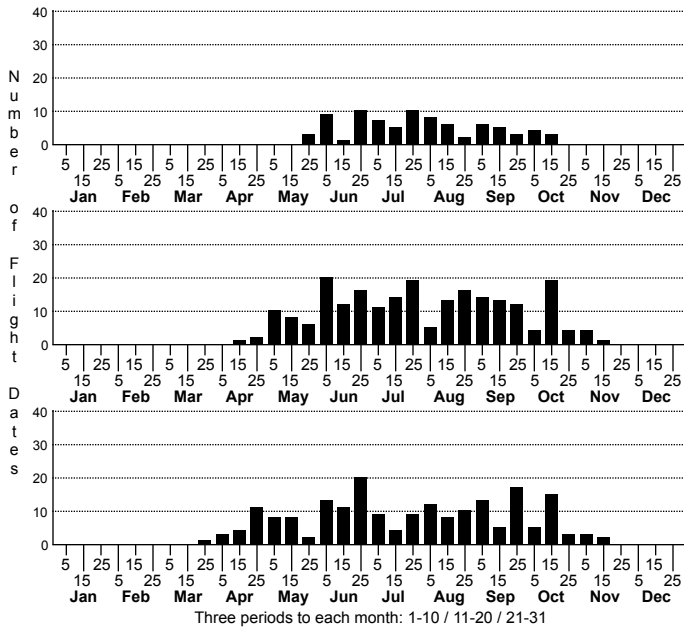


*Idia americalis* American Idia Moth



FAMILY: Erebidae SUBFAMILY: Herminiinae TRIBE:

TAXONOMIC COMMENTS: One of eighteen species recorded in North America (Lafontaine and Schmidt, 2010), twelve of which are found in North Carolina.

FIELD GUIDE DESCRIPTIONS: Covell (1984); Beadle and Leckie (2012)

ONLINE PHOTOS:

TECHNICAL DESCRIPTION, ADULTS:

TECHNICAL DESCRIPTION, IMMATURE STAGES:

ID COMMENTS: A moderately small deltoid with a blue-gray ground color, particularly in the basal area and along the costa; the area beyond the reniform may be shaded with yellow or with darker fuscous in some individuals. The lines are dark black and strongly waved or dentate and expanded towards the costa. The orbicular is yellowish and reniform consists of a yellow crescent followed by a reddish-orange patch (Forbes, 1954). A continuous black terminal line exists, followed by a checkered fringe.

DISTRIBUTION: Occurs statewide

FLIGHT COMMENT: Please refer to the flight charts.

HABITAT: The majority of our records come from forested habitats, including maritime forests, swamp forests, mesic slopes, and dry ridges. Some also come from open habitats, but usually from areas with forests located nearby.

FOOD: Larvae feed on dead leaves, detritus, and lichens (Wagner et al., 2011)

OBSERVATION\_METHODS: Comes readily to bait and to blacklights

NATURAL HERITAGE PROGRAM RANKS: G5 S5

STATE PROTECTION: Has no legal protection, although permits are required to collect it on state parks and other public lands.

COMMENTS: