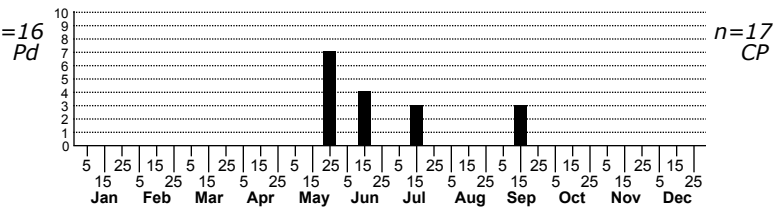
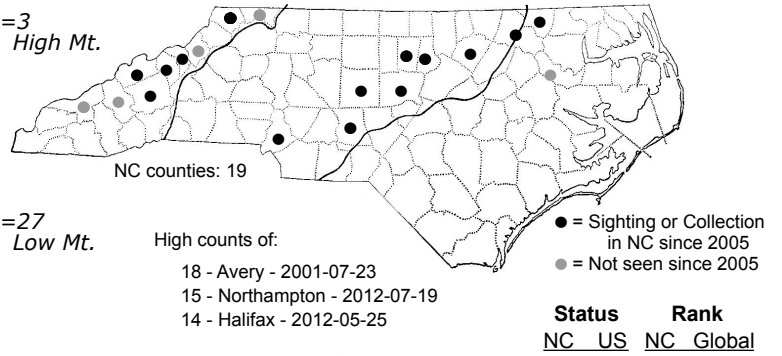
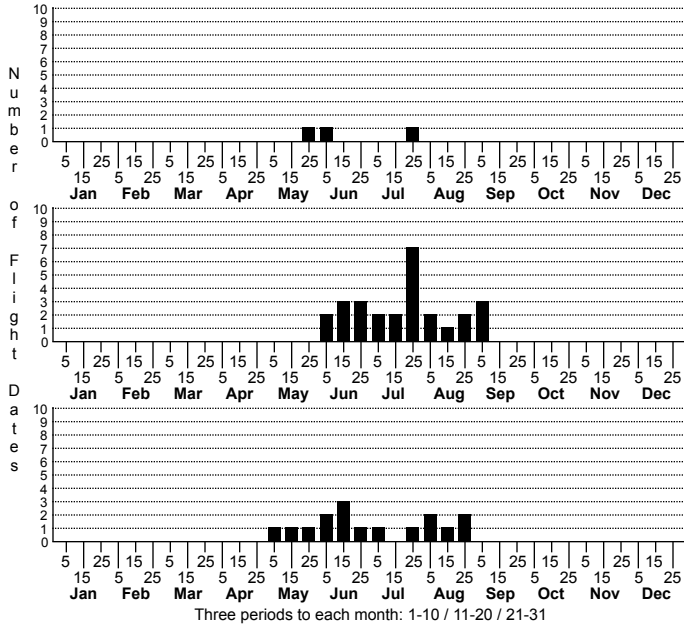


Phalaenostola eumelusalis Dark Phalaenostola



FAMILY: Erebiidae SUBFAMILY: Herminiinae TRIBE:
 TAXONOMIC_COMMENTS:

FIELD GUIDE DESCRIPTIONS: Beadle and Leckie (2012)
 ONLINE PHOTOS:
 TECHNICAL DESCRIPTION, ADULTS:
 TECHNICAL DESCRIPTION, IMMATURE STAGES:

ID COMMENTS:

DISTRIBUTION: Please refer to the dot map.

FLIGHT COMMENT: Please refer to the flight charts.

HABITAT: Our records come almost entirely from floodplain forests and open, graminoid-dominated wetlands; a very few also come from high elevation mesic forests.

FOOD: Larvae have been reared on dead grass but the hosts used in the wild are unknown (Wagner et al., 2011).

OBSERVATION_METHODS:

NATURAL HERITAGE PROGRAM RANKS: GNR SNR [S3S5]

STATE PROTECTION: Has no legal protection, although permits are required to collect it on state parks and other public lands.

COMMENTS: