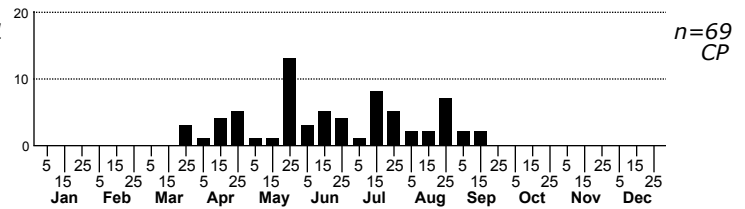
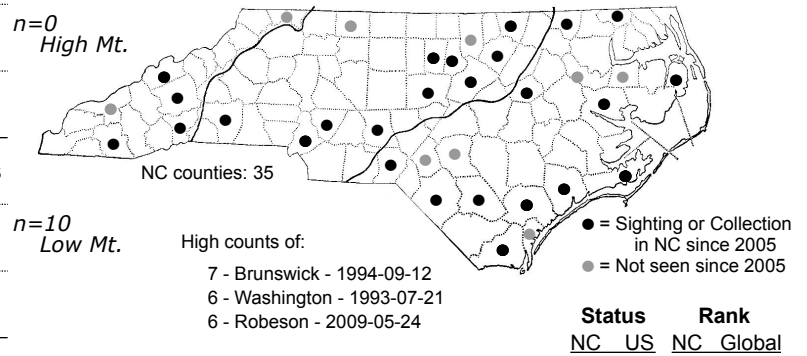
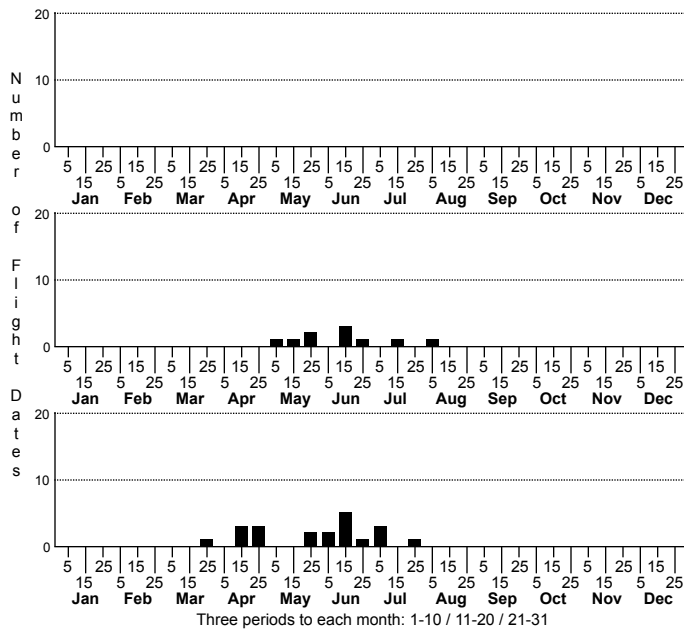


Colobochoyla interpuncta Yellow-lined Owlet Moth



FAMILY: Erebidae SUBFAMILY: Hypeninae TRIBE:
TAXONOMIC_COMMENTS:

FIELD GUIDE DESCRIPTIONS: Covell (1984); Beadle and Leckie (2012)

ONLINE PHOTOS:

TECHNICAL DESCRIPTION, ADULTS:

TECHNICAL DESCRIPTION, IMMATURE STAGES: Wagner et al. (2011)

ID COMMENTS:

DISTRIBUTION: Please refer to the dot map.

FLIGHT COMMENT: Please refer to the flight charts.

HABITAT: Our records come from a wide range of shoreline and marsh-edge habitats.

FOOD: Larvae feed on willow (<i>Salix</i>) (Wagner et al., 2011). We do not have any feeding records in North Carolina.

OBSERVATION_METHODS:

NATURAL HERITAGE PROGRAM RANKS: G4 SNR [S4S5]

STATE PROTECTION: Has no legal protection, although permits are required to collect it on state parks and other public lands.

COMMENTS: