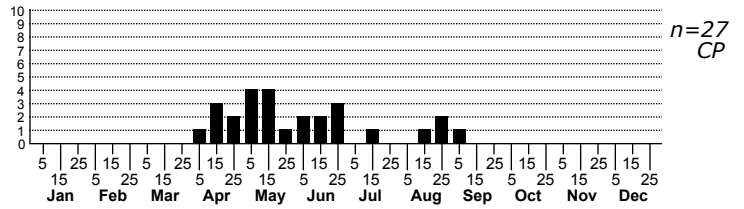
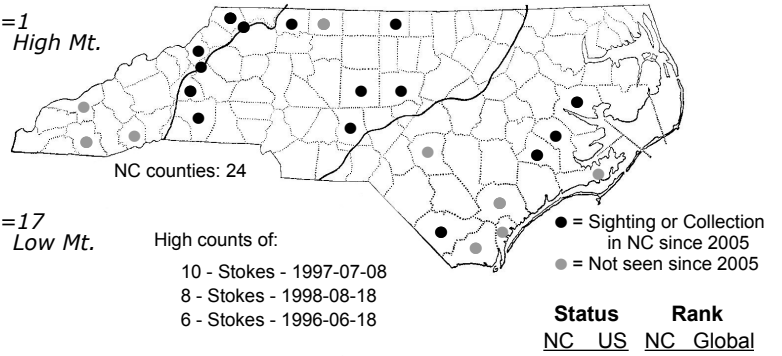
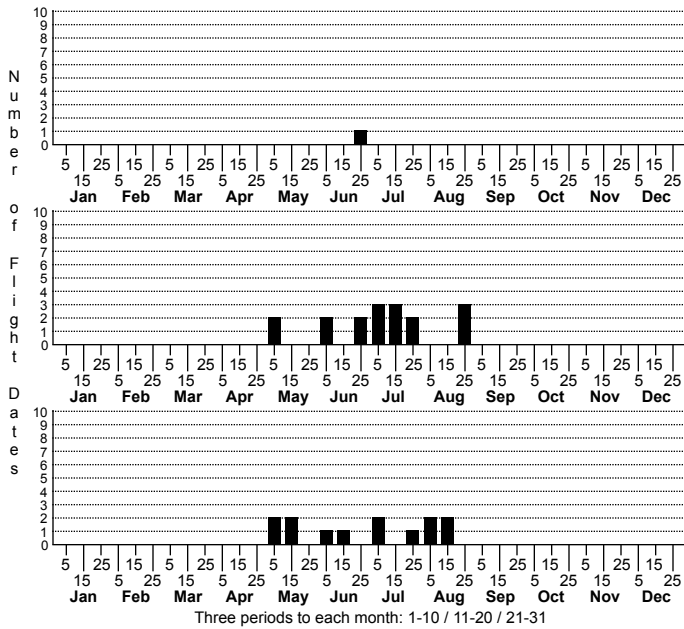


Drasteria grandirena Figure-seven Moth



FAMILY: Erebidae SUBFAMILY: Erebinae TRIBE: Melipotini
 TAXONOMIC_COMMENTS:

FIELD GUIDE DESCRIPTIONS: Covell (1984); Beadle and Leckie (2012)

ONLINE PHOTOS:

TECHNICAL DESCRIPTION, ADULTS:

TECHNICAL DESCRIPTION, IMMATURE STAGES:

ID COMMENTS:

DISTRIBUTION: Please refer to the dot map.

FLIGHT COMMENT: Please refer to the flight charts.

HABITAT:

FOOD: Larvae are monophagous on American Witch-hazel (<i>Hamamelis virginiana</i>) (Wagner et al., 2011). In North Carolina, Jeff Niznik has reared a larva from Witch-hazel.

OBSERVATION_METHODS:

NATURAL HERITAGE PROGRAM RANKS: G5 SNR [S3S4]

STATE PROTECTION: Has no legal protection, although permits are required to collect it on state parks and other public lands.

COMMENTS: