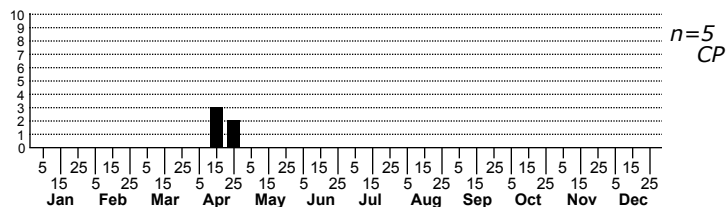
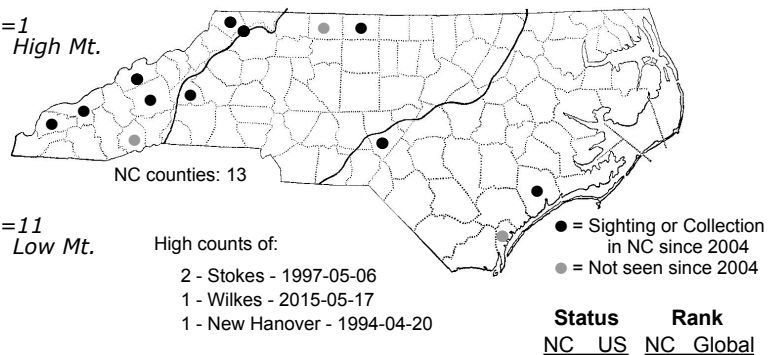
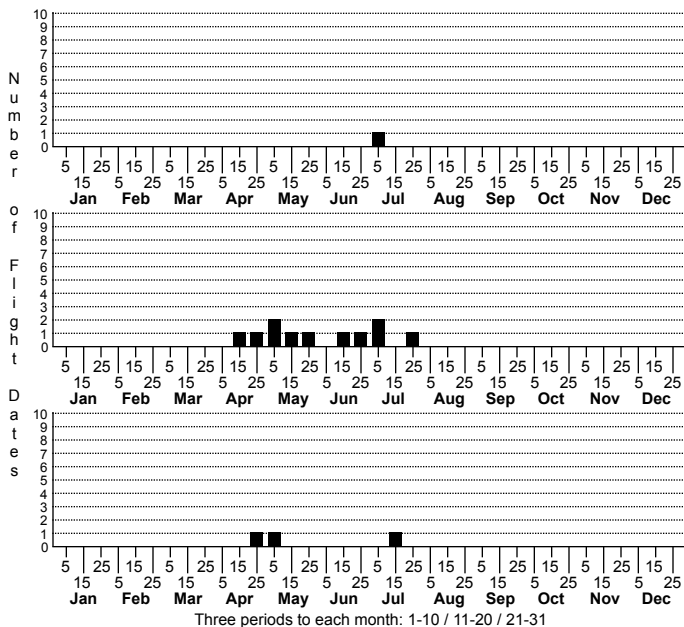


# *Euclidia cuspeida* Toothed Somberwing Moth



FAMILY: Erebidae SUBFAMILY: Erebinae TRIBE: Euclidiini  
 TAXONOMIC\_COMMENTS:

FIELD GUIDE DESCRIPTIONS: Covell (1984); Beadle and Leckie (2012)

ONLINE PHOTOS:

TECHNICAL DESCRIPTION, ADULTS:

TECHNICAL DESCRIPTION, IMMATURE STAGES:

ID COMMENTS:

DISTRIBUTION: Please refer to the dot map.

FLIGHT COMMENT: Please refer to the flight charts.

HABITAT:

FOOD: Larvae have been recorded on Legumes and grasses (Wagner et al., 2011). Robinson et al. (2011) also add Grape (*Vitis* sp.)

OBSERVATION\_METHODS:

NATURAL HERITAGE PROGRAM RANKS: G5 S3S4

STATE PROTECTION: Has no legal protection, although permits are required to collect it on state parks and other public lands.

COMMENTS: