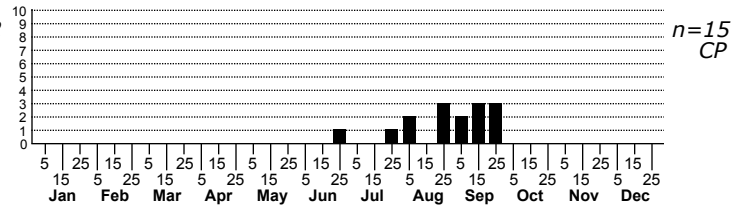
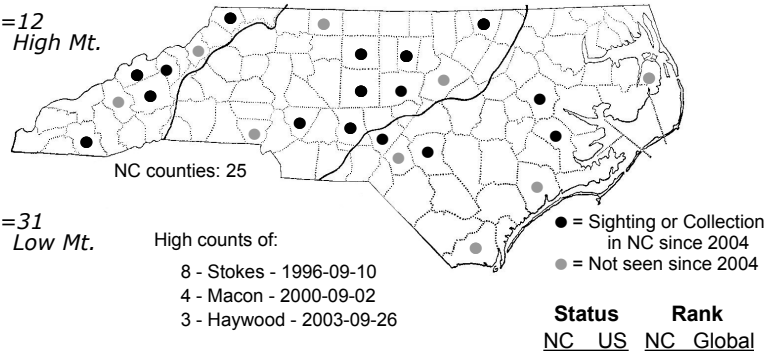
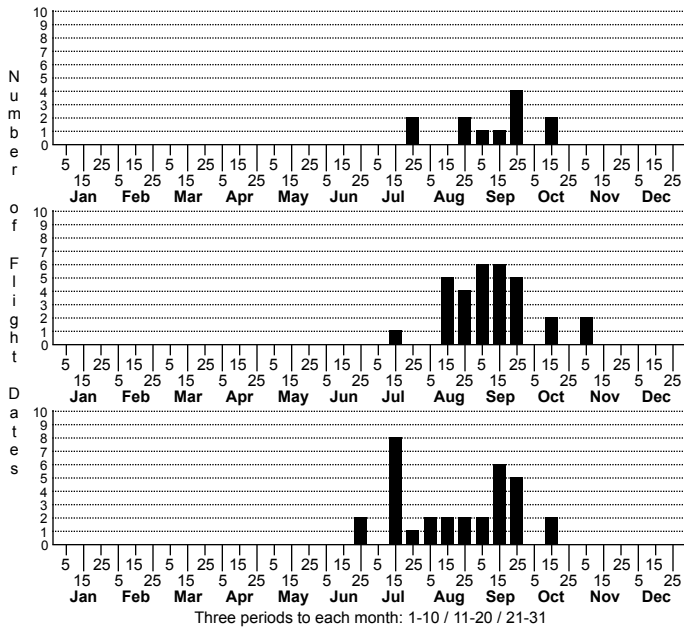


Catocala lacrymosa Tearful Underwing



FAMILY: Erebidae SUBFAMILY: Erebinae TRIBE: Catocalini

TAXONOMIC COMMENTS: One of 103 species in this genus that occur in North America (Lafontaine and Schmidt, 2010, 2015), 67 of which have been recorded in North Carolina. Included by Barnes and McDunnough (1918) in their Group VI (also adopted by Forbes, 1954). This groups comprises 15 species, all of which feed on Hickories or Walnuts (Juglandaciae). In addition to *lacrymosa*, other members of this group that occur in North Carolina include *retecta*, *dejecta*, *ulalume*, *insolabilis*, *myristica*, *vidua*, *maestosa*, *palaeogama*, *nebulosa*, *subnata*, and *neogama*.

FIELD GUIDE DESCRIPTIONS: Covell (1984); Beadle and Leckie (2012)

ONLINE PHOTOS:

TECHNICAL DESCRIPTION, ADULTS:

TECHNICAL DESCRIPTION, IMMATURE STAGES:

ID COMMENTS: This species comes in a wide variety forms, with the ground color ranging from black, green, to reddish-brown. The antemedian and postmedian lines are filled with white just adjacent to the inner margin, forming a pair of distinctive white tear-drops or crescents (Forbes, 1954); the wings are also often sprinkled with white scales. The hindwings are black, with a white fringe.

DISTRIBUTION: Please refer to the dot map.

FLIGHT COMMENT: Please refer to the flight charts.

HABITAT: Records from maritime forests, sand ridges, alluvial forests, cove forests and dry ridges

FOOD: Larvae feed on section *Carya* hickories (Wagner et al., 2011)

OBSERVATION_METHODS:

NATURAL HERITAGE PROGRAM RANKS: G5 S4S5

STATE PROTECTION: Has no legal protection, although permits are required to collect it on state parks and other public lands.

COMMENTS: