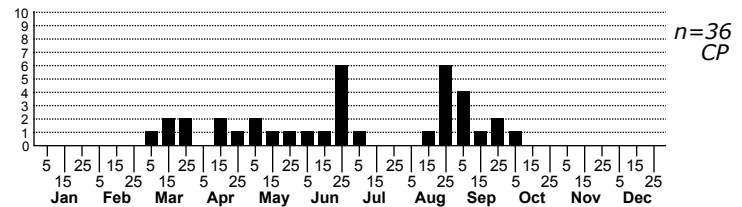
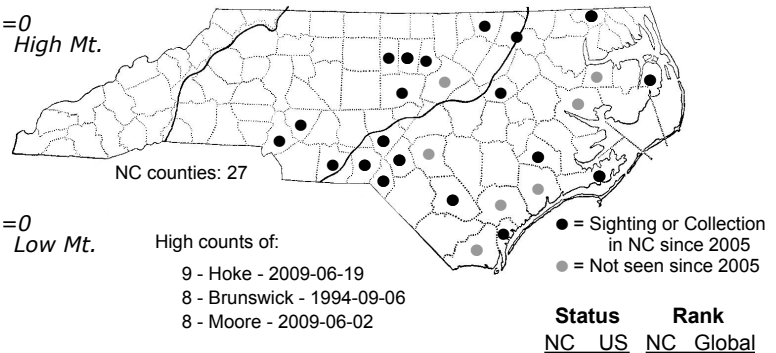
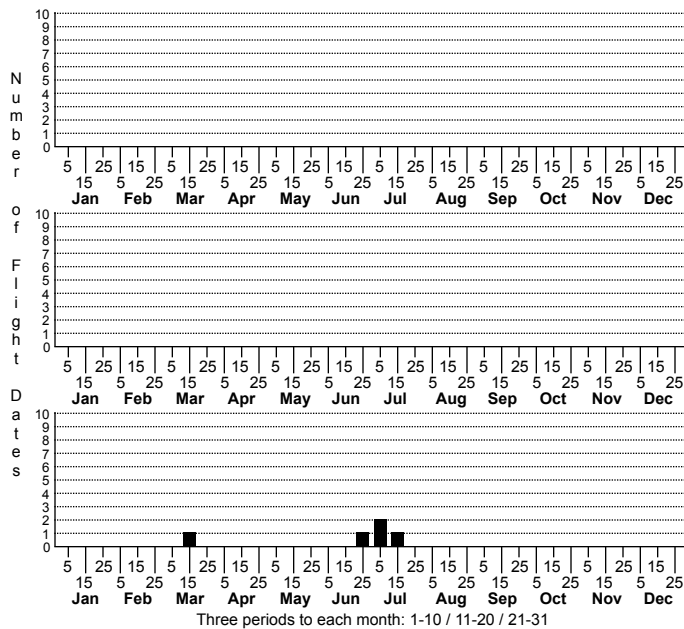


Acronicta obliqua Smeared Dagger



FAMILY: Noctuidae SUBFAMILY: Acronictinae TRIBE:

TAXONOMIC COMMENTS: One of 74 species in this genus found in North America north of Mexico (Schmidt and Anweiler, 2020), 42 of which have been recorded in North Carolina. *Acronicta obliqua* is a member of Species Group V of Forbes (1954), which in North Carolina also includes *A. impleta*, *A. noctivaga*, *A. impressa*, *A. longa*, *A. lanceolaria*, and *A. sinescripta*.

FIELD GUIDE DESCRIPTIONS: Covell (1984); Beadle and Leckie (2012)

ONLINE PHOTOS:

TECHNICAL DESCRIPTION, ADULTS: Forbes (1954); Schmidt and Anweiler (2020)

TECHNICAL DESCRIPTION, IMMATURE STAGES:

ID COMMENTS:

DISTRIBUTION: Found primarily in the coastal plain and sandhills regions, but we also have a few records from the Piedmont.

FLIGHT COMMENT: Please refer to the flight charts.

HABITAT: Wagner et al. (2011) list beaches, marshes, wet meadows, swamps, and other open, usually wet to moist habitats as used by this species. Our records come almost entirely from the edges of ponds, lakes, and stream shorelines, most fairly open and with a rich herbaceous vegetation.

FOOD: Larvae are polyphagous, feeding on many species of forbs, shrubs, and small trees, including some conifers (Wagner et al., 2011). Covell (1984) lists apple (*Malus*), clover (*Trifolium*), Corn (*Zea mays*), cotton (*Gossypium*), elm (*Ulmus*), oak (*Quercus*), pine (*Pinus*), smartweed (*Persicaria*), strawberry (*Fragaria*), and willow (*Salix*). In North Carolina as of 2025, this species has been observed feeding on Buttonbush (*Cephalanthus occidentalis*), Swamp Cottonwood (*Populus heterophylla*), Virginia Iris (*Iris virginica*), and two native willow species, Coastal Plain Willow (*Salix caroliniana*) and Silky Willow (*S. sericea*). It likely also utilizes a wide range of other host plants in the state.

OBSERVATION METHODS:

NATURAL HERITAGE PROGRAM RANKS: G5 SNR [S4S5]

STATE PROTECTION: Has no legal protection, although permits are required to collect it on state parks and other public lands.

COMMENTS: