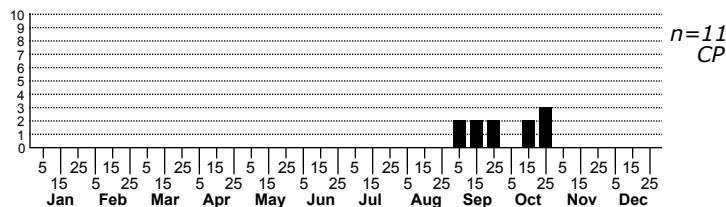
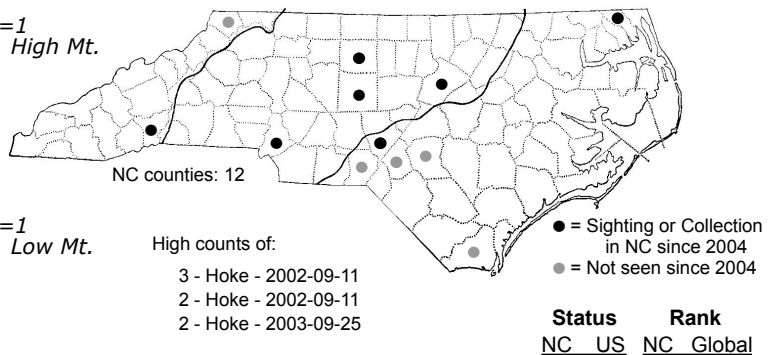
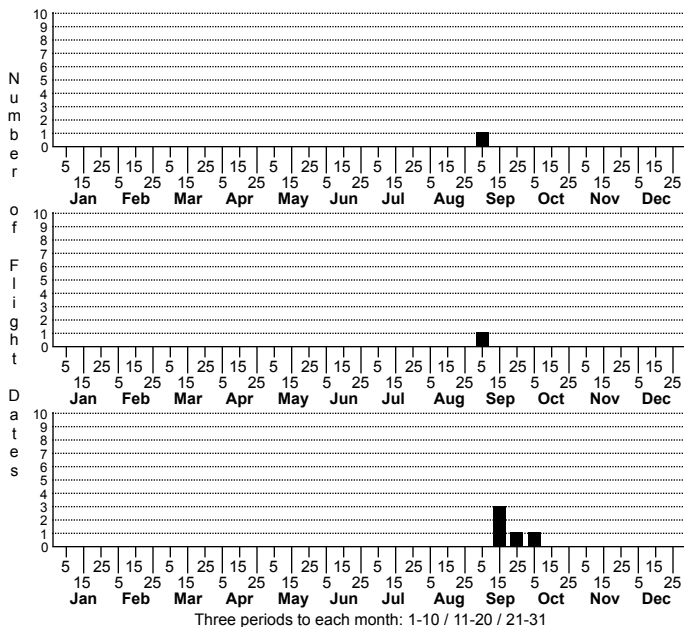


*Meropleon diversicolor* Multicolored Sedgeminer Moth



FAMILY: Noctuidae SUBFAMILY: Noctuinae TRIBE: Apameini  
 TAXONOMIC\_COMMENTS:

FIELD GUIDE DESCRIPTIONS: Beadle and Leckie (2012)

ONLINE PHOTOS:

TECHNICAL DESCRIPTION, ADULTS:

TECHNICAL DESCRIPTION, IMMATURE STAGES:

ID COMMENTS: The basal half of the forewing is gray, heavily shaded with blackish especially towards the inner margin, and with some reddish scaling over the fold (Forbes, 1954). The outer half is contrastingly whitish, shaded with pale gray. The antemedian line is strongly arched; at its farthest out, it is about twice as far from the base as from the postmedian. The lower half of the antemedian is blackish but filled with white. The postmedian is sinuous and white above the cubital vein (Cu1) but heavily black below. The orbicular is pale and oblique and preceded and followed by black lines. The reniform is obscure but has a straight, heavy black line forming the anterior edge. The claviform is a loop lying adjacent to the antemedian below the cell. The hindwings are whitish, shaded with pale gray. *Meropleon ambifusca* is similar but darker and has an antemedian line that is far less arcuate; at its closest to the postmedian, it is only slightly closer to it than to the base.

DISTRIBUTION: Please refer to the dot map.

FLIGHT COMMENT: Please refer to the flight charts.

HABITAT: Apart from one record from a high elevation summit, all of our records come from low elevation wetlands, mainly sandhill streamheads and beaver ponds

FOOD: Larvae have been found boring within *Scirpus cyperinus* (Bird, in Forbes, 1954)

OBSERVATION\_METHODS:

NATURAL HERITAGE PROGRAM RANKS: G5 S3S4

STATE PROTECTION: Has no legal protection, although permits are required to collect it on state parks and other public lands.

COMMENTS: