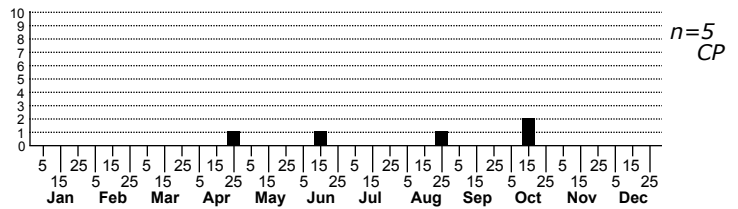
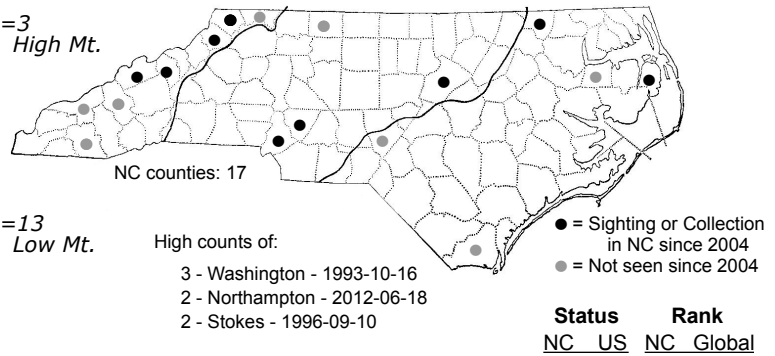
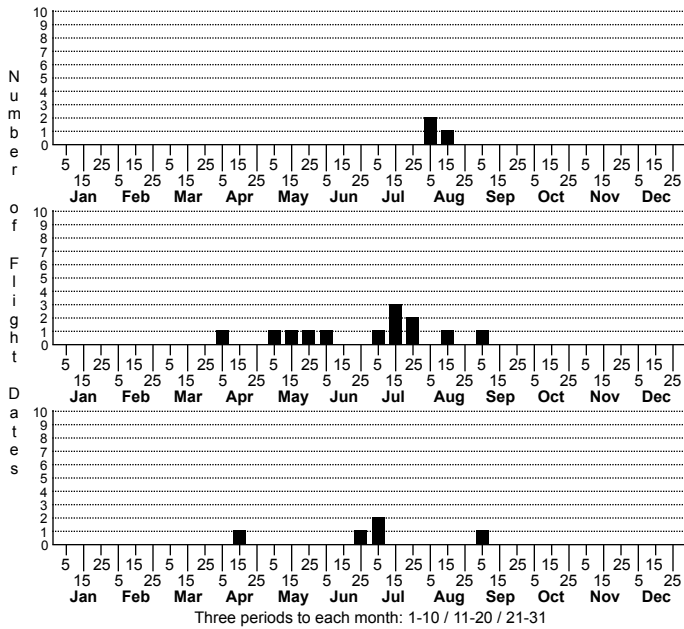


Proxenus miranda Miranda Moth



FAMILY: Noctuidae SUBFAMILY: Noctuinae TRIBE: Caradrinini
 TAXONOMIC_COMMENTS:

FIELD GUIDE DESCRIPTIONS: Covell (1984); Beadle and Leckie (2012)

ONLINE PHOTOS:

TECHNICAL DESCRIPTION, ADULTS:

TECHNICAL DESCRIPTION, IMMATURE STAGES:

ID COMMENTS:

DISTRIBUTION: Please refer to the dot map.

FLIGHT COMMENT: Please refer to the flight charts.

HABITAT: Our records come from a wide range of habitats, ranging from barrier islands and coastal peatlands to high elevation forests. We are unsure, however, whether any of these records represent resident populations.

FOOD: Larvae are polyphagous on forbs, including crop species such as Cantalope, Strawberry, Sugarbeet, and Sweet Potato (Wagner et al., 2011)

OBSERVATION_METHODS:

NATURAL HERITAGE PROGRAM RANKS:

STATE PROTECTION: Has no legal protection, although permits are required to collect it on state parks and other public lands.

COMMENTS: