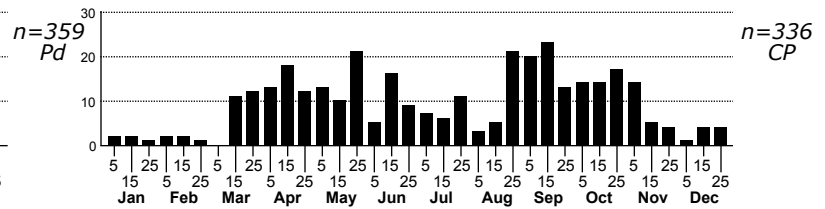
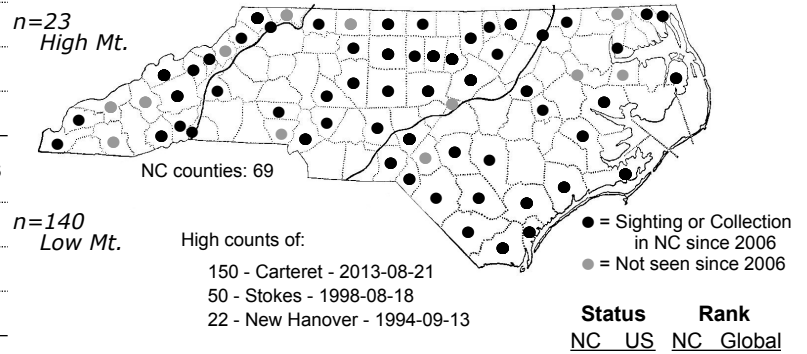
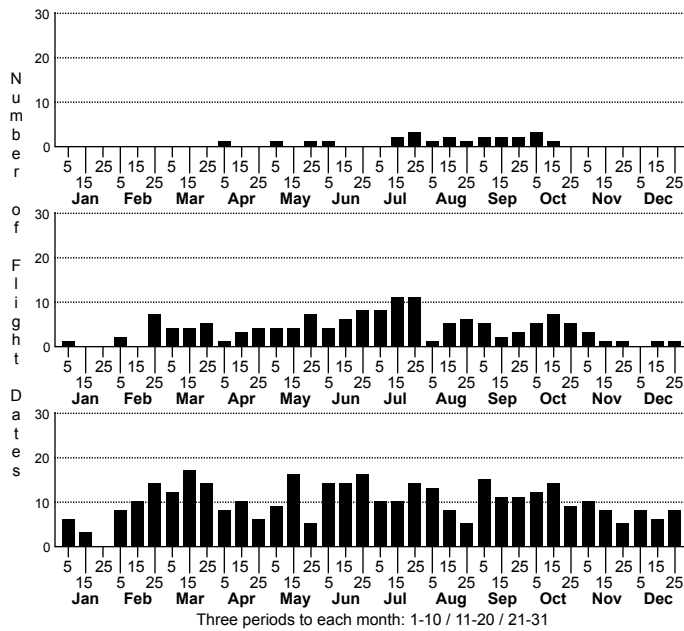


Galgula partita Wedgling Moth



FAMILY: Noctuidae SUBFAMILY: Noctuinae TRIBE: Elaphriini
TAXONOMIC_COMMENTS:

FIELD GUIDE DESCRIPTIONS: Covell (1984); Beadle and Leckie (2012)

ONLINE PHOTOS:

TECHNICAL DESCRIPTION, ADULTS:

TECHNICAL DESCRIPTION, IMMATURE STAGES:

ID COMMENTS:

DISTRIBUTION: Please refer to the dot map.

FLIGHT COMMENT: Please refer to the flight charts.

HABITAT: Wagner et al. (2011) list woodlands and meadows as habitats used by this species. Our records come from a wide range of both open and forested habitats, and both wet and dry.

FOOD: Larvae are stenophagous on woodsorrel (<i>Oxalis</i> spp.) (Wagner et al., 2011).

OBSERVATION_METHODS:

NATURAL HERITAGE PROGRAM RANKS: G5 SNR [S5]

STATE PROTECTION: Has no legal protection, although permits are required to collect it on state parks and other public lands.

COMMENTS: