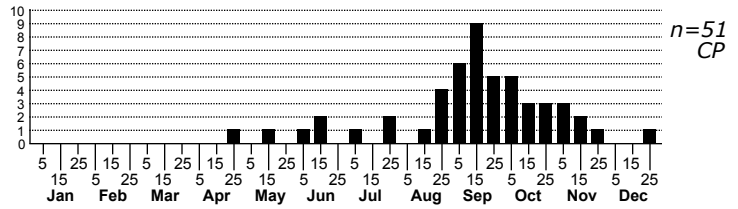
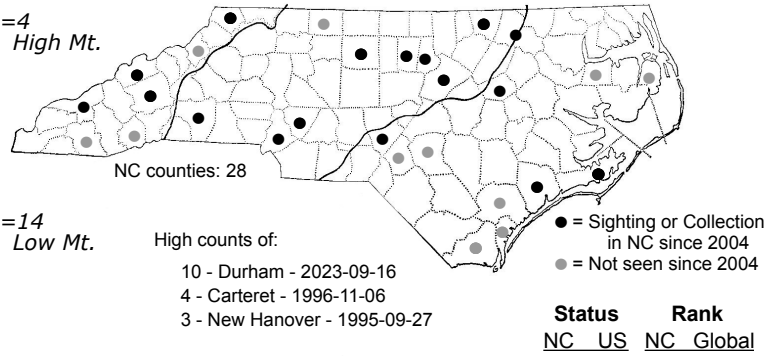
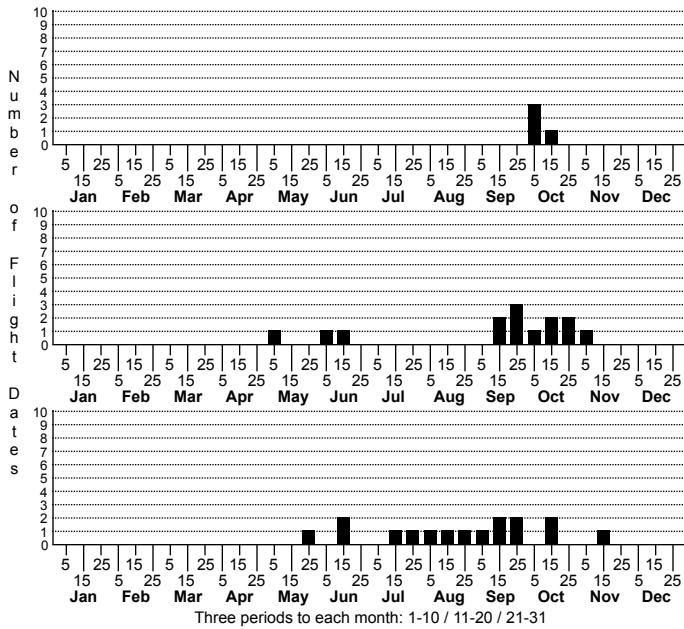


# Condica mobilis Mobile Groundling Moth



FAMILY: Noctuidae SUBFAMILY: Condicinae TRIBE: Condicini  
 TAXONOMIC\_COMMENTS:

FIELD GUIDE DESCRIPTIONS: Covell (1984; as *Platysenta mobilis*); Beadle and Leckie (2012)

ONLINE PHOTOS:

TECHNICAL DESCRIPTION, ADULTS:

TECHNICAL DESCRIPTION, IMMATURE STAGES:

ID COMMENTS:

DISTRIBUTION: Please refer to the dot map.

FLIGHT COMMENT: Please refer to the flight charts.

HABITAT: Our records from the Coastal Plain come primarily from open habitats, including dune grasslands on the barrier islands and Longleaf Pine-dominated woodlands further inland. Piedmont records come mainly from lakeshores and old fields. Habitats recorded in the Mountains include wet meadows, old fields, and residential neighborhoods.

FOOD: Larvae feed on *Bidens* (Wagner et al., 2011)

OBSERVATION\_METHODS:

NATURAL HERITAGE PROGRAM RANKS: G5 S5

STATE PROTECTION: Has no legal protection, although permits are required to collect it on state parks and other public lands.

COMMENTS: