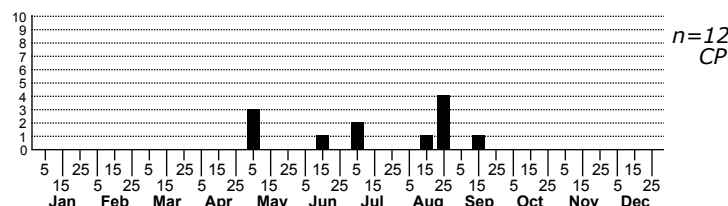
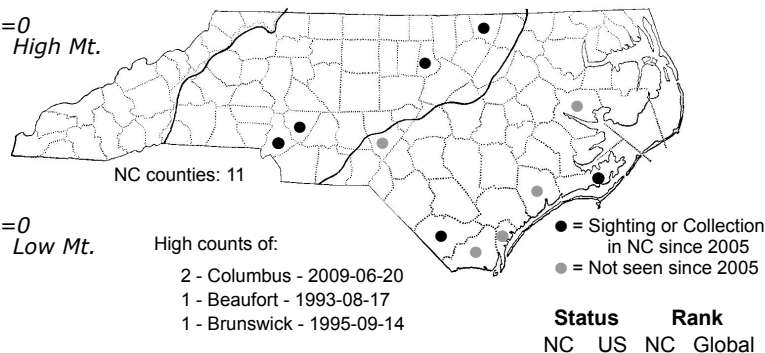
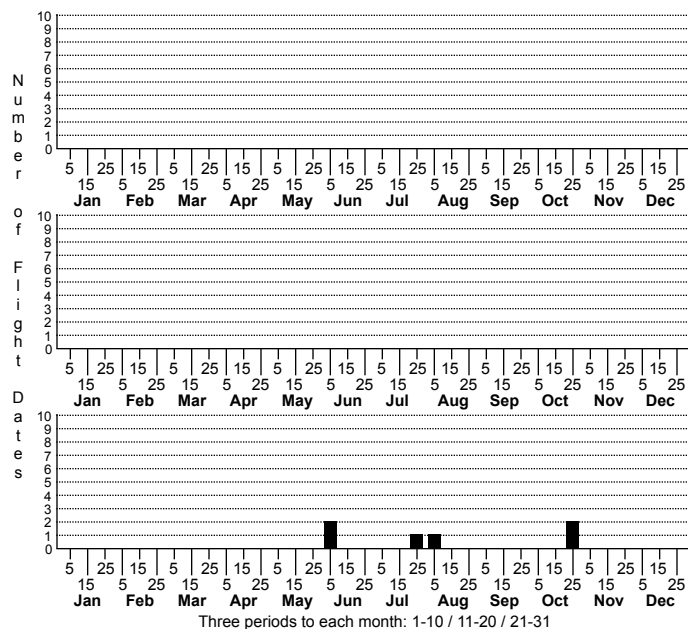


Condica cupentia Spotted Groundling



FAMILY: Noctuidae SUBFAMILY: Condicinae TRIBE: Condicini
TAXONOMIC_COMMENTS:

FIELD GUIDE DESCRIPTIONS:

ONLINE PHOTOS:

TECHNICAL DESCRIPTION, ADULTS: Poole (2017)

TECHNICAL DESCRIPTION, IMMATURE STAGES:

ID COMMENTS: Males can be distinguished from *Condica confederata* by forewing pattern but females are more safely distinguished by genitalic features (Poole, 2017).

DISTRIBUTION: Please refer to the dot map.

FLIGHT COMMENT: Please refer to the flight charts.

HABITAT: Our records come primarily from open, herbaceous areas near water, including marshes, savannas, and lake shorelines.

FOOD: Larvae feed on composites, including *Bidens*, *Mikania*, and *Pluchea* (Robinson et al., 2010). We do not have any feeding records in North Carolina.

OBSERVATION_METHODS:

NATURAL HERITAGE PROGRAM RANKS: GNR SNR [S2S3]

STATE PROTECTION: Has no legal protection, although permits are required to collect it on state parks and other public lands.

COMMENTS: