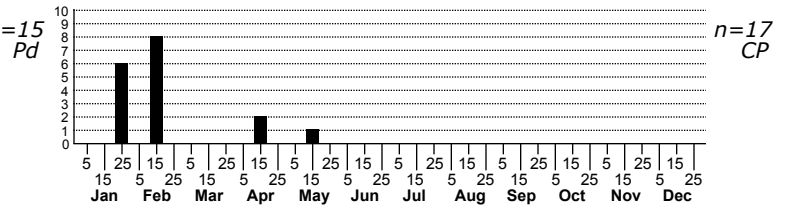
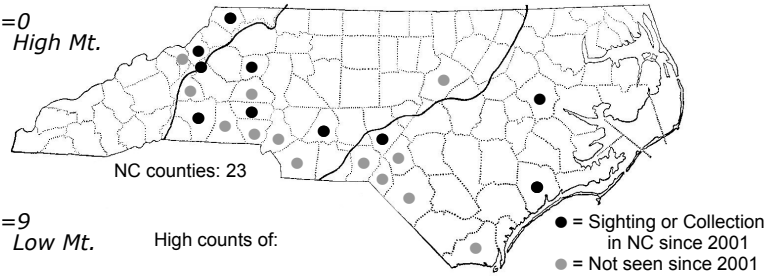
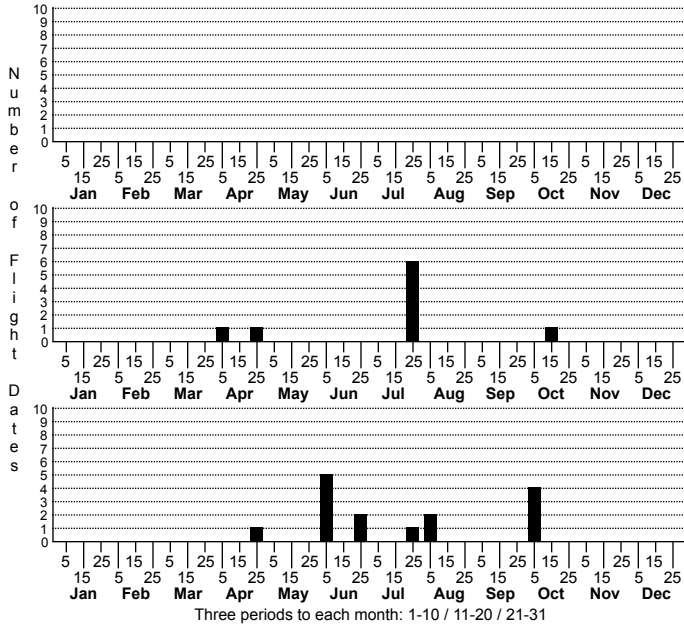


*Sigmoria latior* Red-sided Flat Millipede



FAMILY: Xystodesmidae SUBFAMILY: TRIBE:

TAXONOMIC\_COMMENTS: Includes specimens characterized as intergrades by Shelley (1976)

FIELD GUIDE DESCRIPTIONS:

ONLINE PHOTOS:

ID COMMENTS:

DISTRIBUTION: Please refer to the dot map.

HABITAT: Shelley (1981) includes populations from the Fall-line Sandhills and Outer Coastal Plain as "intergrades" between the nominate form and subspecies hoffmani. At least some of these intergrades occupy dry-to-xeric Longleaf Pine/xerophytic Oak-dominated habitats (Hall, pers. obs.).

OBSERVATION\_METHODS:

NATURAL HERITAGE PROGRAM RANKS:

STATE PROTECTION:

COMMENTS: