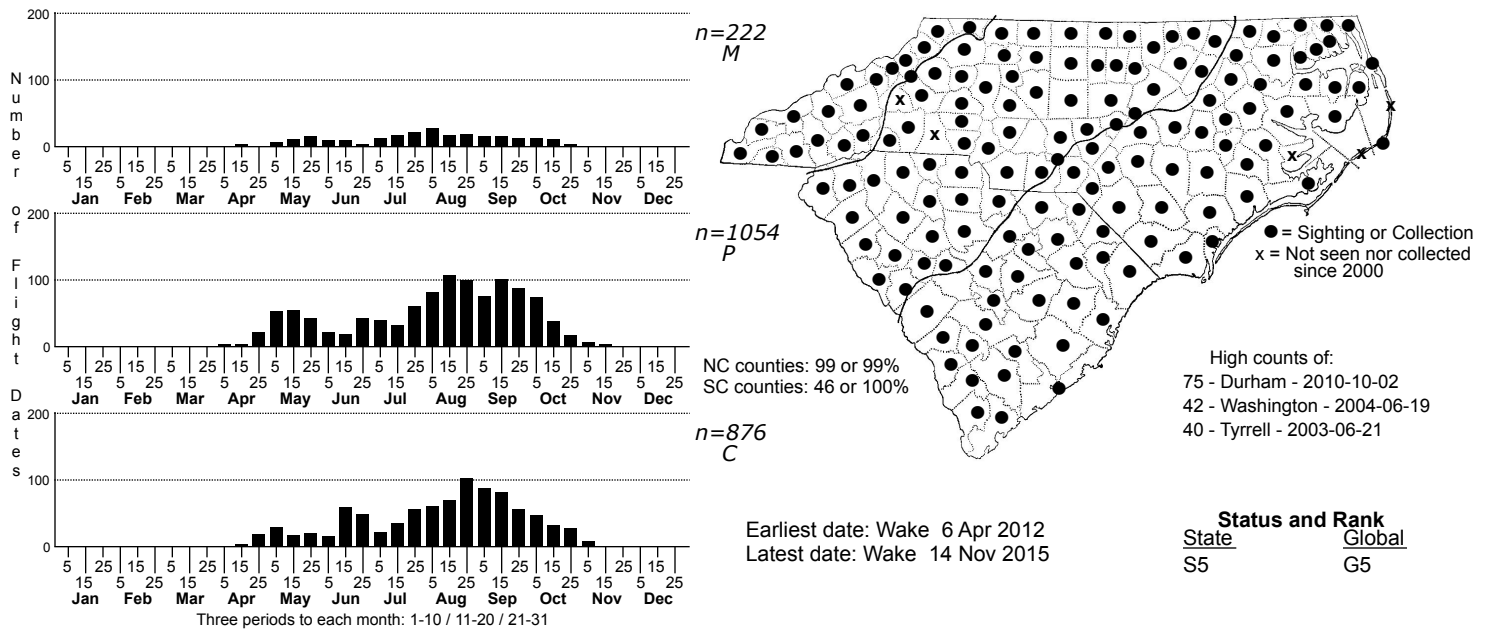


Viceroy *Limenitis archippus*



DISTRIBUTION: Statewide, from the coast to the mountains; certainly occurs in all NC counties.

ABUNDANCE: Fairly common to locally common in the lower Coastal Plain; locally fairly common in the upper Coastal Plain and eastern Piedmont. However, uncommon in the Mountains and the western 2/3rds of the Piedmont.

FLIGHT PERIOD: Probably three broods, generally occurring from late April to early November. Rather scarce before mid-June, as the first brood is a somewhat small one. The second brood begins downstate in mid-June and in the mountains in early July, but the third brood (if there is one) overlaps broadly with the second.

HABITAT: The Viceroy tends to favor moist areas near willows (*Salix* spp.). Habitats are typically margins of fresh or slightly brackish marshes, shores of lakes and ponds, wet thickets, edges of moist woods, etc. It is a species of open, moist sites, not normally seen far into uplands.

FOOD AND NECTAR PLANTS: The foodplants are primarily willows, in NC mostly Black Willow (*Salix nigra*) and Coastal Plain Willow (*S. caroliniana*). Adults nectar on many flowers, not favoring any particular species; they also feed on moisture on dirt roads or mud, on sap, carrion, etc.

COMMENTS: The Viceroy is easily confused with the Monarch unless seen well. It may take some effort to see it in the Mountains and Piedmont, where the best places to look are around lake shores where willows are common. In the tidewater section, particularly near fresh or slightly brackish marshes with willows, Viceroys may be locally common.