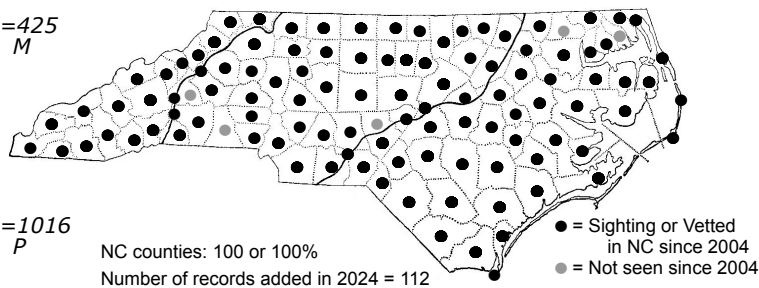
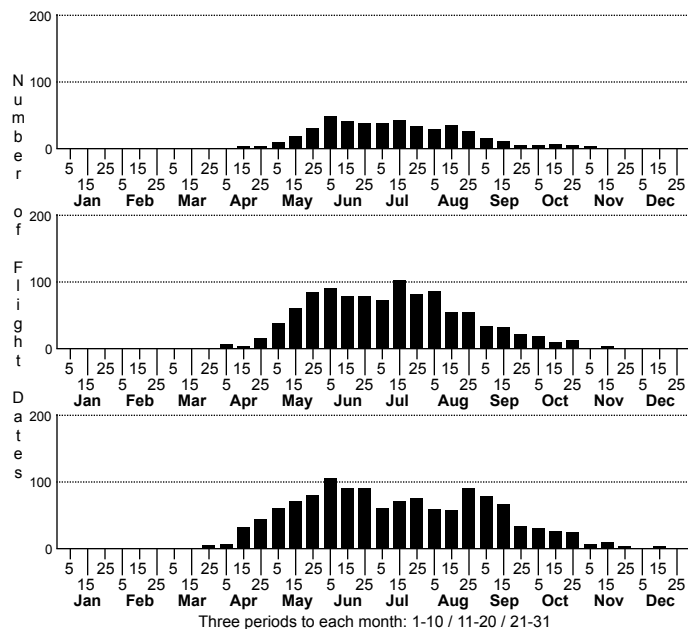


Pachydiplax longipennis Blue Dasher



High counts of:
 1225 - Wake - 2013-07-06
 965 - Wake - 2013-06-12
 885 - Wake - 2014-07-19

Earliest date: Onslow 2020-03-27
 Latest date: Onslow 2020-12-11

Status		Rank	
NC	US	NC	Global
-	-	S5	G5

DISTRIBUTION: Statewide, occurring in all 100 counties.

ABUNDANCE: Abundant throughout. This is arguably the most numerous dragonfly in NC (and the eastern United States), possibly even outnumbering the ubiquitous Eastern Pondhawk.

FLIGHT: Throughout most of the odonate flight season. Downstate, from late March or early April to late October, rarely to late November. In the mountains, from late April to late October.

HABITAT: A wide range of still water, from ponds, lakes, ditches, canals, pools, and marshes; occasionally in slow-moving portions of rivers or creeks.

BEHAVIOR: Males are frequently seen perching on twigs or herbaceous vegetation along the margin of a pond, making short forays over the water for patrolling purposes. Both sexes feed well away from water, especially females. They perch conspicuously, typically within 3-4 feet of the ground, in fields, powerline clearings, savannas, and many other places, both in full sun or partial shade.

COMMENTS: For many species of skimmers, pennants, and other members of the Family Libellulidae, an observer hopes to find a given species by walking along the shoreline of a still body of water. This is seldom a problem with finding Blue Dashers, as every pond seems to have a dozen or more individuals, often equaling or exceeding the number of all other dragonflies of other species! Total numbers of Blue Dashers in NC must be in the tens of millions.