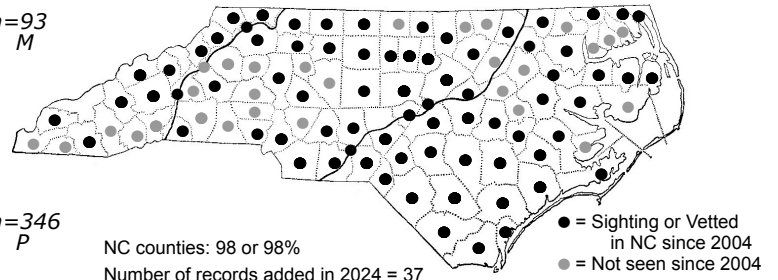
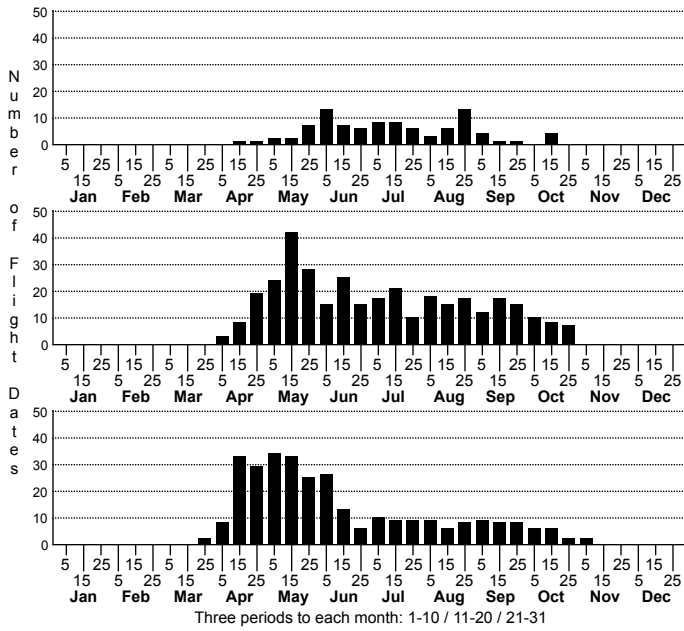


*Enallagma signatum* Orange Bluet



Sight (not vetted) in 2024: Wilkes; M

High counts of:  
325 - Wake - 2013-09-14  
265 - Wake - 2012-08-16  
260 - Wake - 2015-09-19

Earliest date: Robeson 2024-03-29  
Latest date: Harnett; C 2023-11-05

| Status |    | Rank |        |
|--------|----|------|--------|
| NC     | US | NC   | Global |
| -      | -  | S5   | G5     |

**DISTRIBUTION:** Statewide, lacking records from just two mountain counties. Certainly present in all 100 counties. Unlike many damselflies with a "statewide" range, this species has been recorded from all coastal counties.

**ABUNDANCE:** Common and widespread in the Coastal Plain and Piedmont; locally abundant in a few areas. Fairly common to perhaps locally common in the mountains.

**FLIGHT:** A long flight period -- early or mid-April to late October, in all three provinces.

**HABITAT:** A broad range of lakes, ponds, and slow-moving streams.

**BEHAVIOR:** This species is active mostly in the afternoons at its ponds and streams; often hard to find on a morning visit, though it certainly can be seen before noon.

**COMMENTS:** This is as widespread in the state as any damselfly, and is reasonably common as well. The orange color on the male is quite noticeable. As mentioned above, if you visit pond and lake shores mostly in the morning, you might have trouble finding any and wonder why the species is considered to be common and widespread!