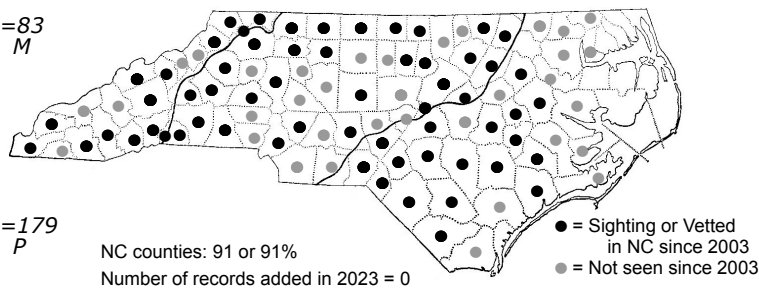
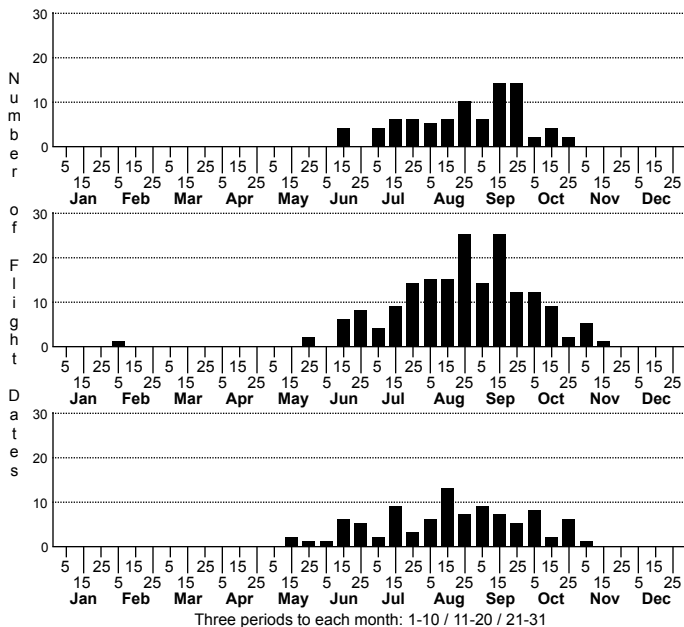


## *Boyeria vinosa* Fawn Darner



High counts of:  
17 - Cleveland - 1992-09-19  
15 - Madison - 2020-10-20  
8 - Madison - 2017-09-21

Earliest date: Durham 2015-02-05  
Latest date: Wake 2014-11-11

Status		Rank	
NC	US	NC	Global
-	-	S5	G5

**DISTRIBUTION:** Nearly statewide, but apparently absent from the immediate eastern Coastal Plain north and south of Albemarle Sound. No records east of Gates, Chowan, Beaufort, and Carteret counties.

**ABUNDANCE:** Uncommon to fairly common (but easily overlooked) in the mountains, Piedmont, and upper Coastal Plain; less numerous in much of the Coastal Plain, but not rare except near the coast.

**FLIGHT:** The flight begins in mid-May in the Coastal Plain, late May in the Piedmont, and mid-June in the mountains. It extends into early November in the Piedmont and Coastal Plain, and to late October in the mountains.

**HABITAT:** Flies low over creeks, typically following the creek banks, poking into nooks and crannies. Favors somewhat slow-moving creeks in hardwood forests.

**BEHAVIOR:** This species and the Ocellated Darner like dark places. It rests for most of the day inside a forest, hanging on twigs; sometimes disturbed when an observer is walking through a forest near a creek. It normally flies late in the afternoon and at dusk.

**COMMENTS:** Fawn Darners must often be intentionally searched for, looking around creeks late in the day. A dragonfly flying slowly back and forth along creek banks, in shady situations, is often a Fawn Darner.